



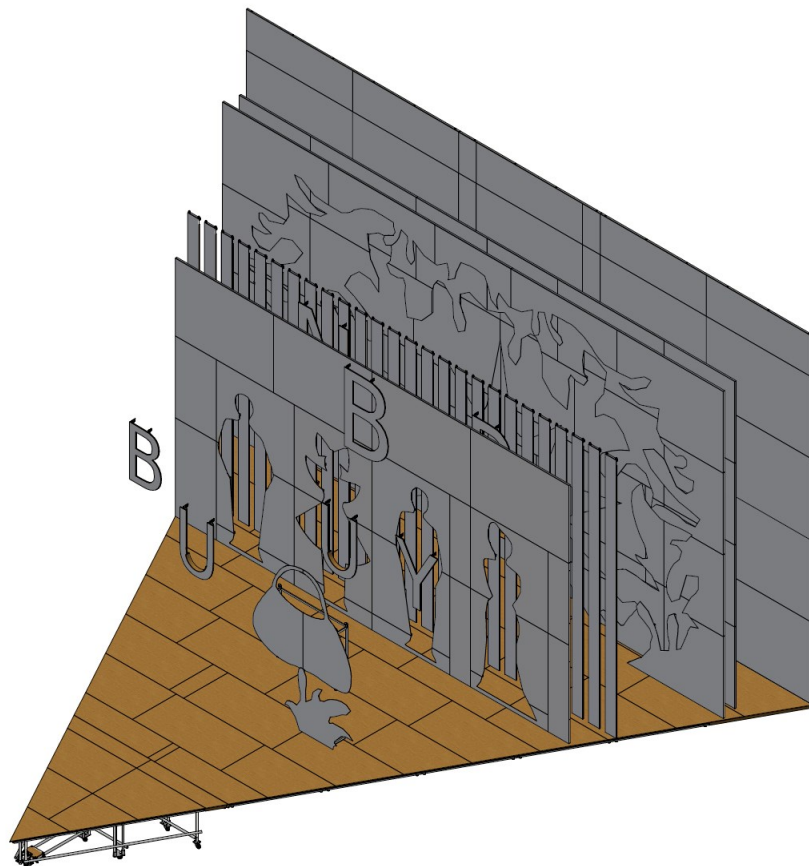
Appendix 1.

Project Description and Specifications

For the acquisition of set pieces for:

Bunbury

Reference no.: 111126



October 2024



Appendix 1. Project Description and Specifications

Bunbury

1. Project Description	3
1.1 General Description.....	3
1.2 Artistic Team	3
1.3 Story Line	3
1.4 Summary – Scenic design	3
1.5 Set Pieces.....	4
2. Work Process	5
2.1 Start-up meeting	5
2.2 Model & drawings.....	5
2.3 Modifications	5
2.4 Regular meetings	5
2.5 Final supervision and pre-assembly meeting	6
2.6 Delivery.....	6
3. General Conditions.....	7
3.1 Model and technical drawings	7
3.2 Weight.....	7
3.3 Materials.....	7
3.4 Quality and safety	7
3.5 Aluminium frame construction and welding.....	8
4. Materiel deliveries by RDT.....	9
6. 111126-01-100_Floor	13
7. 111126-01-80_Back_wall	15
8. 111126-01-90_Bush	16
9. Hanging Elements (A-I)	17

Read more about RDT: <https://kglteater.dk/en/about-us/about-the-theatre/the-history-of-the-royal-danish-theatre/>



1. PROJECT DESCRIPTION

1.1 General Description

The production project

Scenic elements for the play Bunbury.

Opening March 21, 2025 at The Royal Danish Playhouse, Main Stage

The Artistic project

Bunbury (The Importance of Being Earnest) is an Oscar Wilde comedy from 1895. The story follows characters who invent fictitious personas to escape social obligations, filled with sharp wit and clever wordplay.

1.2 Artistic Team

Scenic Design	Jonas Fly
Director	Bastian Kraft
Lightning design	Janus Jensen

1.3 Story Line

It's a tale of self-presentation, deceit, and the ability to take on a new persona. There's no moralizing or condemnation of lying; instead, it celebrates the joy of inventing one's own life, embodying the hedonistic lifestyle of the dandies.

The play also offers a clear reference to today's social media culture, with its polished Instagram-like layer of presentation. The world is a stage, and life is a catwalk exhibition under the spotlight. The emcee also plays various instruments, including drums and guitar.

1.4 Summary – Scenic design

A stage within a stage.

The set features a triangular catwalk area, built on podiums that converge toward the front of the stage, measuring approximately 16 meters wide and 14 meters deep. The backdrop reaches a maximum height of 8.5 meters.



Appendix 1. Project Description and Specifications

Bunbury

A projector is positioned within a column, ideally with the capability to project fully outward. Everything is white, with colors being projected onto the surfaces.

The set includes two-dimensional curtains with a paperclip-like appearance, reminiscent of silhouettes from a coloring book. These feature oversized elements like giant letters, garden plants, and an exaggerated handbag. More set pieces are added as the play progresses.

The design references the era, with an over-the-top Victorian "cream cake" style. There is a rain of white confetti, which is ideally contained within the triangular catwalk area.

Projections are in a style that combines Andy Warhol with a children's book, creating a non-realistic aesthetic. The actors' shadows blend with the projections, adding another layer to the visuals.

1.5 Set Pieces

11126- 06 Floor

11126-07 Back Wall

11126-08 Bush

11126-09 Hanging walls

A 11126-02-01_WALL

B. 11126-02-12_HOLE

C. 11126-02-21_EXPLOSION

D. 11126-02-50_GARDEN1

E. 11126-02-67_GARDEN2

F. 11126-02-81_BLINDS

G. 11126-02-85_SILHOUETTES

H. 11126-02-452_LETTERS

I. 11126-02-411_HANDBAG



2. WORK PROCESS

2.1 Start-up meeting

A start up meeting with the production manager from RDT, covering the review of the full model, commenting in detail on the specific items in the offer.

2.2 Model & drawings

All drawings are available in PDF- version and DWG format. All models are default in STP format.

Digital model created in Autodesk Inventor.

2.3 Modifications

Modifications of any kind, such as any changes to solutions or materials, which might be subject to discussion, must be approved by the production manager at RDT and documented in writing before implementation.

2.4 Regular meetings

Regular meetings at the supplier's premises with the Production Manager and representatives from RDT and/or the Set designer. The meetings must match the production flow, planned and scheduled to meet the quality approval on Structure and surfaces.

If RDT / the production manager or representatives after supervision meetings are concerned about the progress in the workflow according to the delivery time, the supplier must document and proof the ability to comply. The documentation must include a time schedule, milestones, and adequate staffing. In addition to these, a status report and follow-ups on the progress stated to a frequency according to agreement.



Bunbury

2.5 Final supervision and pre-assembly meeting

The Set must be pre-assembled piece by piece, to secure a smooth assembly on stage.

The main issue is that bolt holes or other fixations are aligned.

The production manager and Chief Carpenter will attend the final supervision and pre-assembly meeting, where details of the “get in” will be discussed.

2.6 Delivery

Delivery of the Set pieces for “Bunbury” to RDT will take place: no later than

**08.00 AM, on the 24th of February 2025; at The Danish Royal Theatre
Skuespilhuset, Sankt Annæ Plads 36, 1250 Copenhagen K**

The supplier must be present upon receipt of transport.

The assembly period is 4 days, starting 24.02.2025 and ending 27.02.2025.

The supplier must provide assembly assistance on stage.

The primary assistance is to guide the crew at RDT, who will execute the assembly.

For this production we will need 2 people to assist with the assembly

To ensure a smooth assembly supervision – the supervisors must be able to communicate in Danish or English.

The crew consists of 8 tech crew members and a Chief Carpenter.

Loading facilities

- Playhouse/Skuespilhuset: Please notice – No access for sideload at the Playhouse. The loading dock for long trailer is for rear unloading.

Notice! The RDT Wagons supplied can/should be used as transport dollies.



3. GENERAL CONDITIONS

3.1 Model and technical drawings

In case of doubt - between model, photo or drawing, indications in drawings must be followed, unless specific notes prove differently.

3.2 Weight

The calculation of the total weight of all set pieces within the design process, based on material densities below:

Birch plywood:	700 kg/m ³	Poplar plywood:	448 kg/m ³
Polystyrene:	40 kg/m ³	Twin wall PC:	200 kg/m ³
Wood in general:	500 kg/m ³		

3.3 Materials

Birch plywood is required for certain use and specifically mentioned in drawings if so.

We require Birch plywood.

Please note: All set pieces with paintwork delivered with additional paint for repairs.

3.4 Quality and safety

Ensure that all assembly and removal is possible by using a wrench, hammer, and a screwdriver only. All bolts to be minimum M10, unless otherwise specified.

Labelling: all set pieces labelled with set piece number e.g. '111163.02.16' and weight indication. Labels must be clear, accurate and consistent across the set.

- All hanging set pieces provided with rigging points M10.
- All rigging points used for RDT must be according to Directive 2006/42/EC, add. II A. All rigging points must have at least one bolt with lock nut bolted through the set piece.
- Use planed and bevelled wood only with no sharp edges.
- Channels in Twin Wall PC – must be closed.
- When using hollow profiles, ensure that ends are closed, and all welded seams must be smooth.



Appendix 1. Project Description and Specifications

Bunbury

- When using laser cut steel, edges bevelled.
- All drilled holes for bolted joints in metal profiles must be oversized, for simple installation of bolts.

Welding according to DS/EN/ ISO standards equivalent:

- Steel: DS/EN/ISO 5817 equivalent
- Aluminium: DS/EN/ISO 10042:2018 equivalent; to quality level C

All material must be fire-retardant according to RDT regulations, in case of doubt please contact relevant contact person.

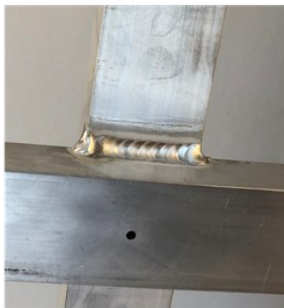
Packaging

- Please ensure protective and re-useable packaging for all structures and elements. The packaging must be sturdy and durable, allowing it to be used also for storage.

3.5 Aluminium frame construction and welding

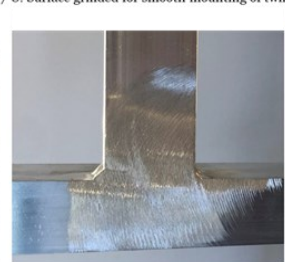
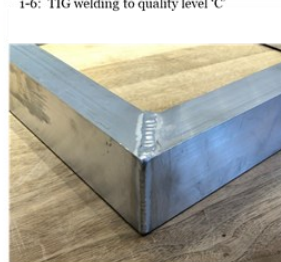
All aluminium frames welded according to DS/EN/ISO 10042 equivalent to quality level C.

Welding quality and details as shown below.



1-6: TIG welding to quality level 'C'

7-8: Surface grinded for smooth mounting of twin wall





4. MATERIEL DELIVERIES BY RDT

Embedded threaded fittings for the project will be provided by RDT.

A total of 75 sets (150 pieces) will be delivered:

- 75 x 0007-01-08_Embedded_threaded_fitting – 40mm, female
- 75 x 0007-01-09_Embedded_threaded_fitting – 40mm, male

These fittings are lathed from aluminum and include a conical joint for precise mounting.

Important: the imbedded threaded fittings are welded in the frames. The fittings must only be welded to the frame.

The Embedded Threaded Fittings must be welded sufficiently to sit firmly fixed in the frame.

Holes for Embedded threaded fittings are Ø30 and centered in the frame.

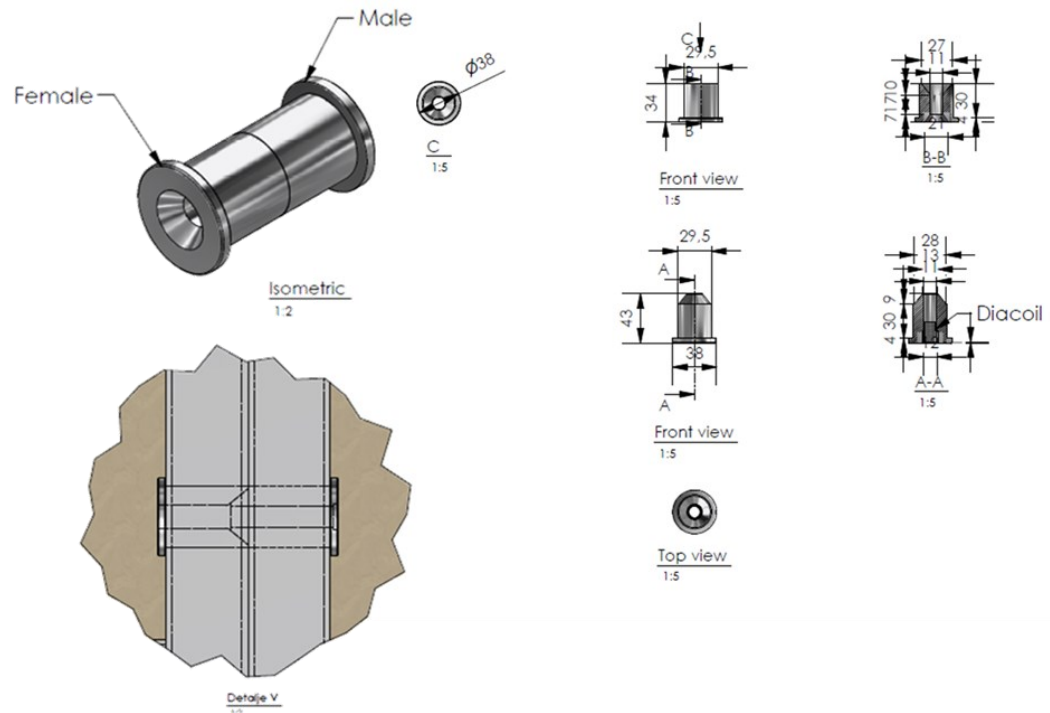
Use insert bolts, not regular bolts!





Appendix 1. Project Description and Specifications

Bunbury



RDT Wagons

RDT will deliver 8 RDT Wagons for transport of this production.

Casters/wheels

All necessary casters/wheels for the production will be delivered by RDT.

Podiums

All podiums for floor + front

Brackets for wall hanging.

Rigging Equipment

Aluminium frames

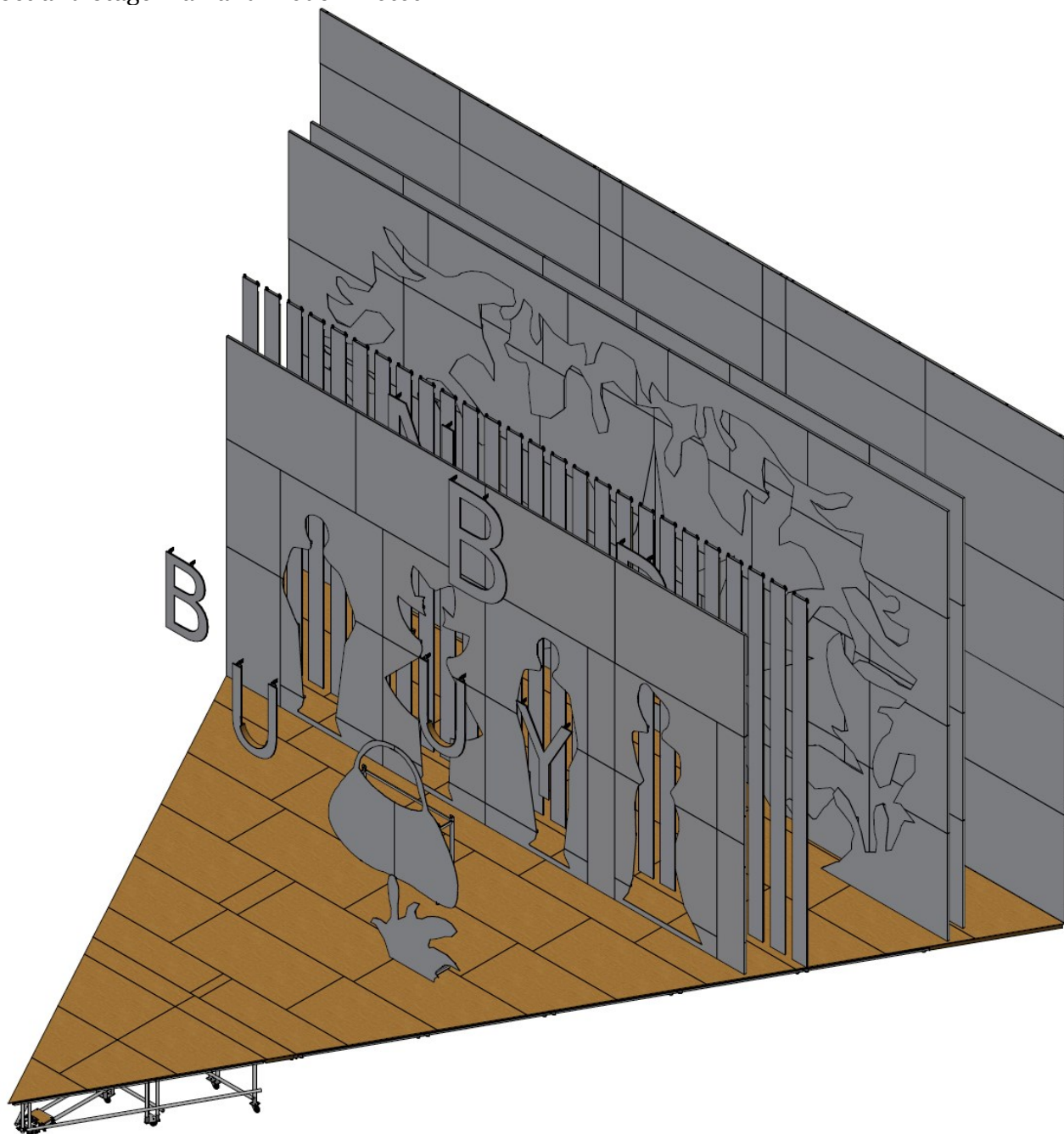
8 pcs. The aluminum frames (1126-02-02) will be delivered from RDT – and is not part of this tender. Please note: The cladding must be made within the tender. More information on drawings. Be sure that embedded fittings match the new frames.



Appendix 1. Project Description and Specifications

Bunbury

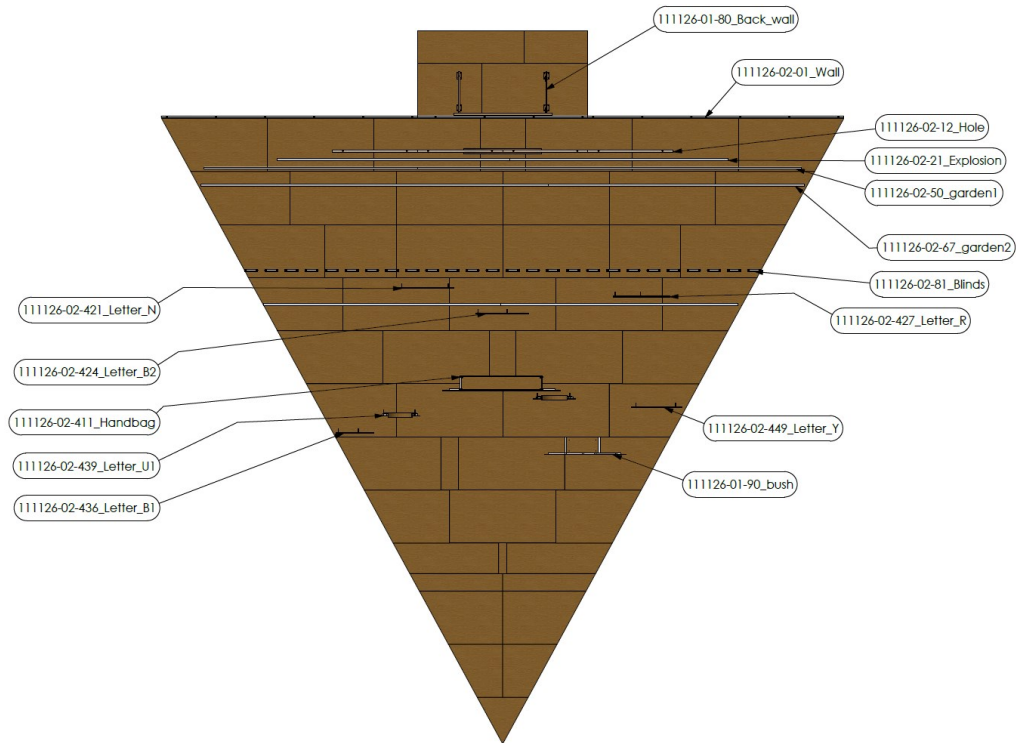
Set and Stage Plan and Model Photos





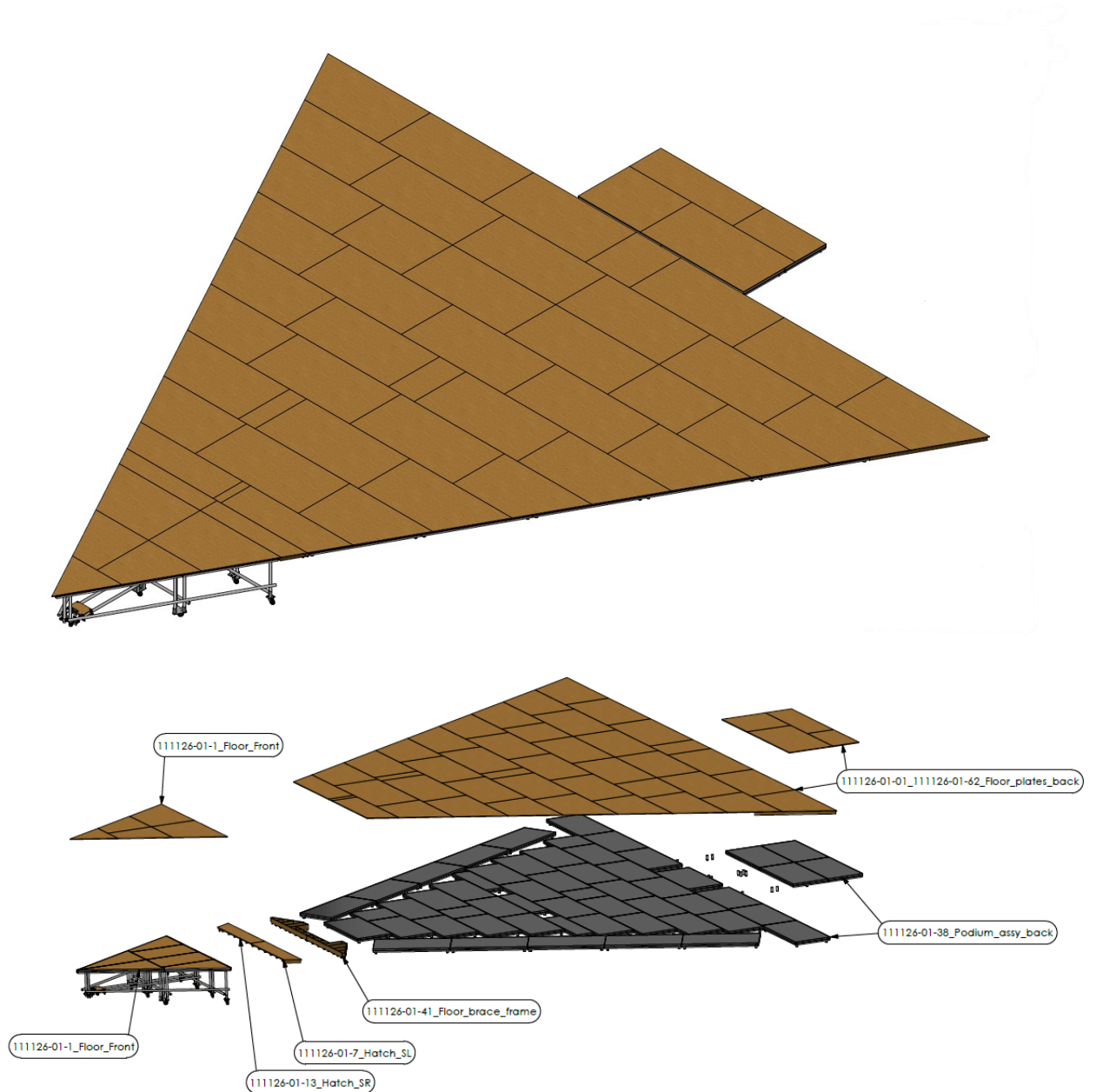
Appendix 1. Project Description and Specifications

Bunbury





6. 111126-01-100_FLOOR



General Description

The floor is a triangle, in two pieces—front and back—both made of podiums with 15 mm birch plywood panels on top. The 111126-01-1_Floor_Front is built on tall legs on wheels, to ease trucking on- and off-stage during setup. During the performance, it is placed in the orchestra pit. The 111126-01-37_Floor_Back uses podiums, short legs and no wheels.



Appendix 1. Project Description and Specifications

Bunbury

Wooden profiles 45x145mm provide additional support for the floor plates between podiums. STP files will be provided for CNC/LASER cutting.

Function Description

Hatches for fire safety.

At the front of the 111126-01-1_Floor_Front, the floor plates are supported by a brace frame (111126-01-41_Floor_brace_frame), and in front of this is a two-part hatch (111126-01-7_Hatch_SL and 111126-01-13_Hatch_SR), connecting the front and back sections of the floor. In case of emergency, the hatches can be opened to allow the iron curtain to lower onto the stage. Behind the back triangle, a small square section is built similarly, and this supports the back wall (111126-01-80_Back_wall).

Surface

All sides (front- back and edges) painted black in matte RAL 9005.

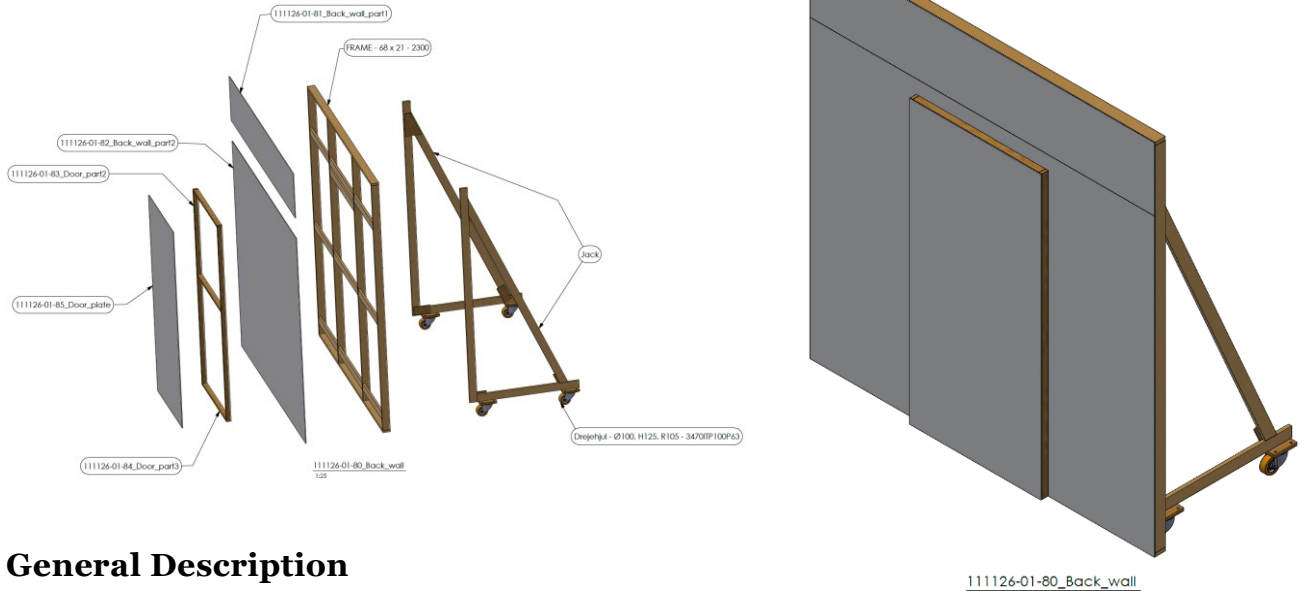
Please note that we ask for a finish with no sharp edges, meaning sanded corners and edges.

Drawing references

111126-01-100_Floor.pdf



7. 111126-01-80_BACK_WALL



General Description

111126-01-80_Back_wall is a small wall placed on the small square podium behind the big triangle floor. The wall is built from 21x68mm pine profiles and clad with 5,4mm recycled plastic honeycomb sheets. All wheels are provided by the Royal Danish Theatre. STP-files will be provided for CNC/LASER-cutting.

Surface

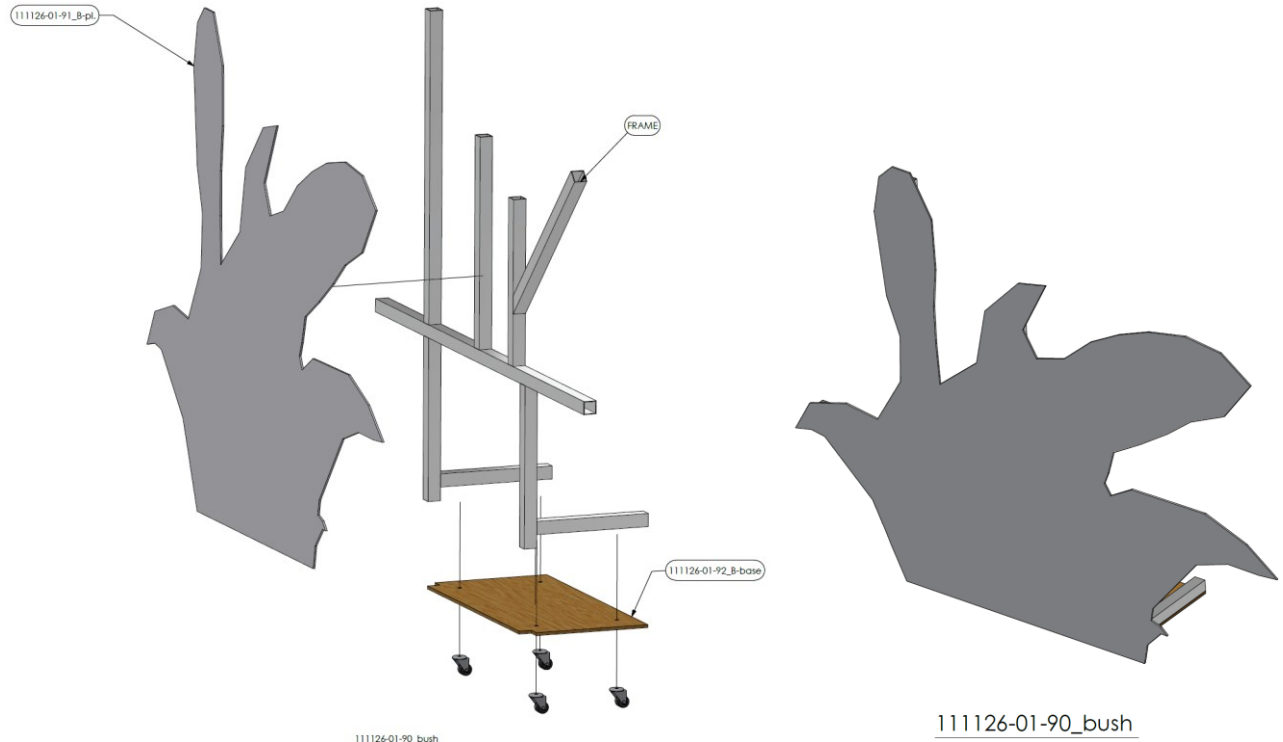
The frames are clad with 5,4mm recycled plastic honeycomb sheets attached using Velcro. The surface must be white and suitable for projection. As an extra safety measure, a flat-head 3,5mm x 16mm screw painted in RAL 9003, must secure the sheet to the frame. All wooden sides painted RAL 9003

Drawing references

Draw. no. 111126-01-101_Back_wall



8. 111126-01-90_BUSH



General Description

111126-01-90_bush is a small element that is moved around on stage by the actors. It is built from 40x40x2mm aluminium profiles, 9mm birch plywood and clad with 5,4mm plastic honeycomb sheets. All wheels and wheel plates are provided by the Royal Danish Theatre. STP-files will be provided for CNC/LASER-cutting.

Surface

The frames are clad with 5,4mm recycled plastic honeycomb sheets attached using Velcro. The surface must be white and suitable for projection. As an extra safety measure, a flat-head 3,5mm x 16mm screw painted in RAL 9003, must secure the sheet to the frame.

Drawing references

Draw. no. 111126-01-102_Bush



9. HANGING ELEMENTS (A-I)

General Description

Structure and materials

All hanging elements are aluminum frames made from 40x40x2mm and 20x40x2mm profiles. The frames are assembled with bolts, and where necessary, extra back support is added to ensure the front panels are properly secured. STP files are provided for CNC/LASER cutting.

Surface

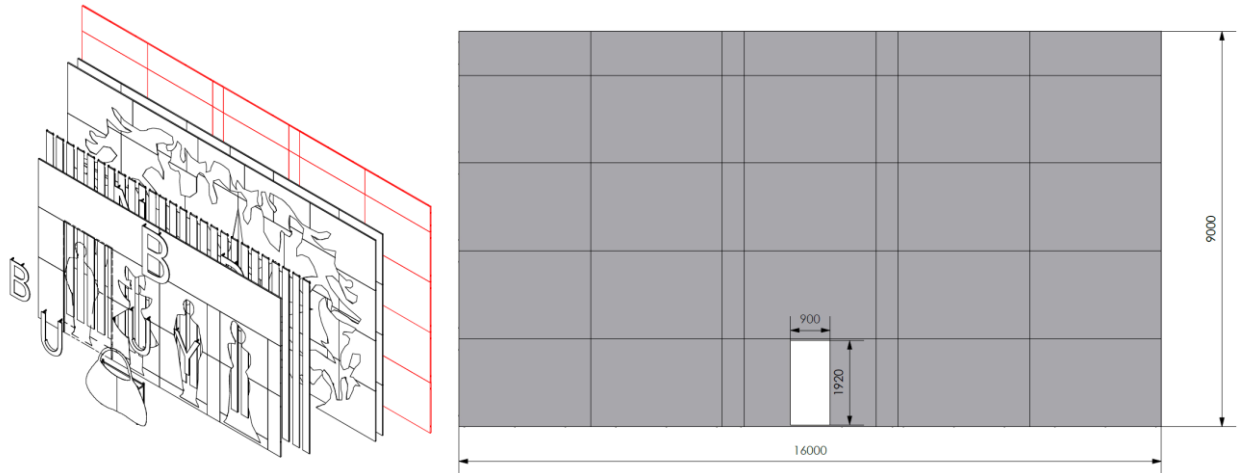
The frames are clad with 5,4mm recycled plastic honeycomb sheets attached using Velcro. These surfaces are designed to be white and suitable for projection. As an extra safety measure, a flat-head 3,5mm x 16mm screw painted in RAL 9003, must secure the sheets to the frame. All visible wood/aluminum surface must be painted RAL 9003

The following chapter contains descriptions of the following hanging set pieces:

- A. 111126-02-01_WALL**
- B. 111126-02-12_HOLE**
- C. 111126-02-21_EXPLOSION**
- D. 111126-02-50_GARDEN1**
- E. 111126-02-67_GARDEN2**
- F. 111126-02-81_BLINDS**
- G. 111126-02-85_SILHUETTES**
- H. 111126-02-452_LETTERS**
- I. 111126-02-111_HANDBAG**



A. 111126-02-01_Wall



Drawing references

Draw. no. 111126-02-101_Wall

Please note:

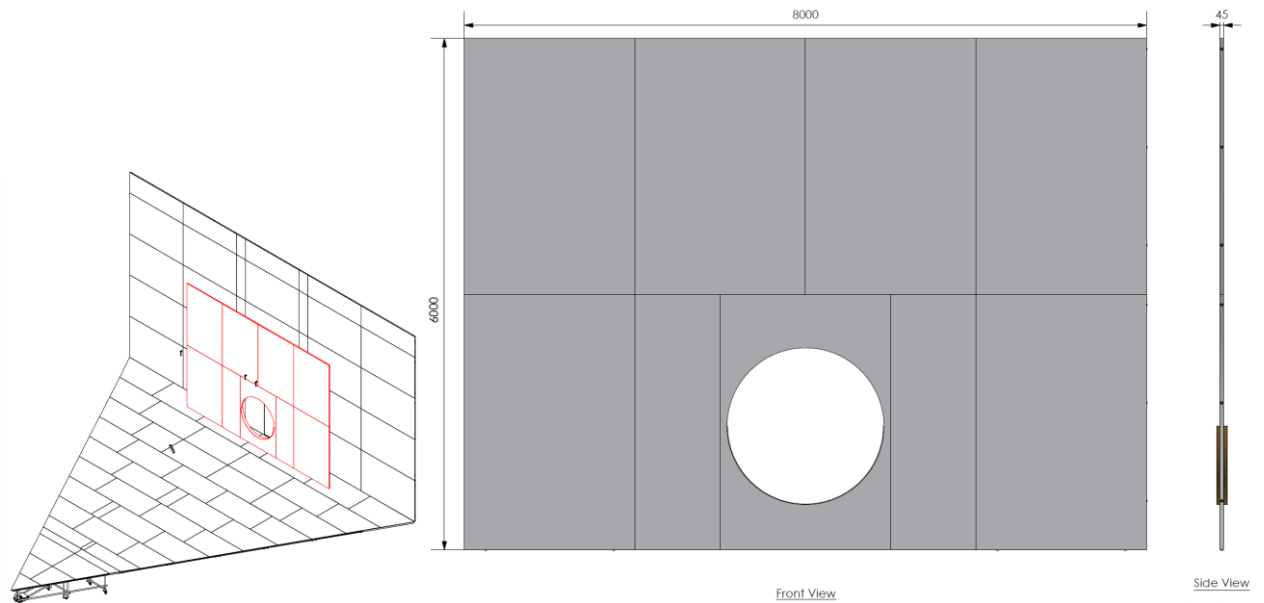
This wall is partly made by reused wall elements – 8 pcs. The aluminum frames (1126-02-02) will be delivered from RDT – and is not part of this tender. But the cladding must be made within the tender. More information on drawings.

B 111126-02-12_Hole



Appendix 1. Project Description and Specifications

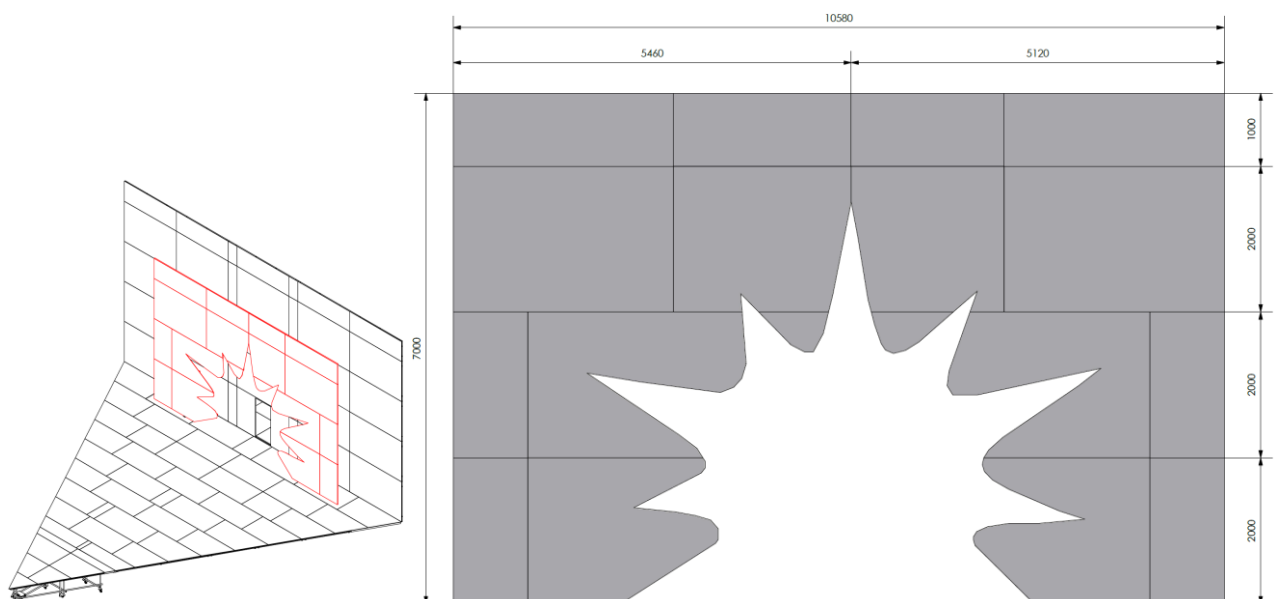
Bunbury



Drawing references

Draw. no. 111126-02-102_Hole

C 111126-02-21_Explosion





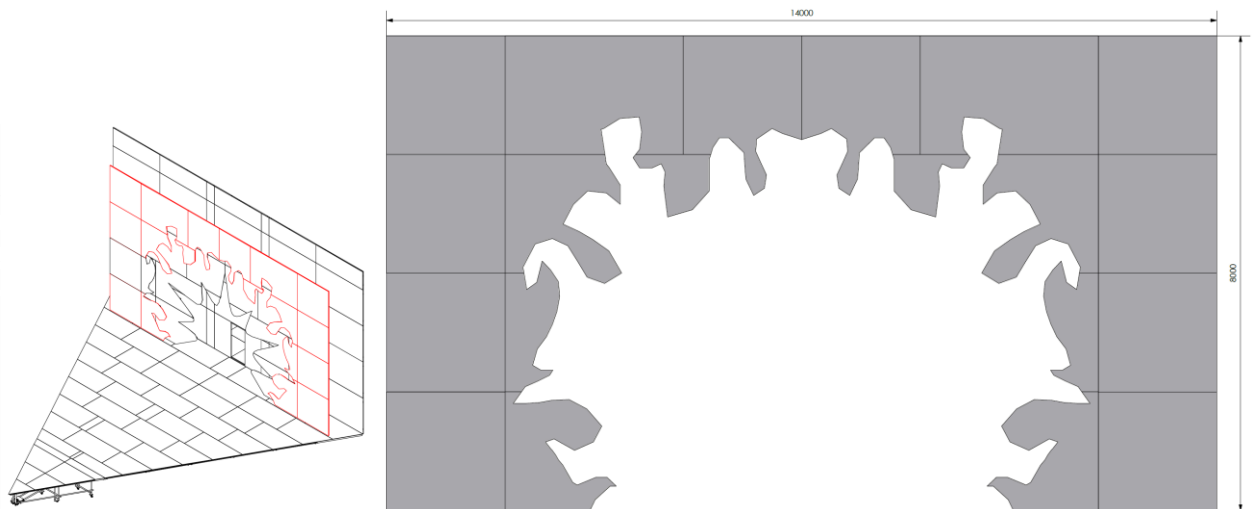
Appendix 1. Project Description and Specifications

Bunbury

Drawing references

Draw. no. 111126-02-103_Explosion

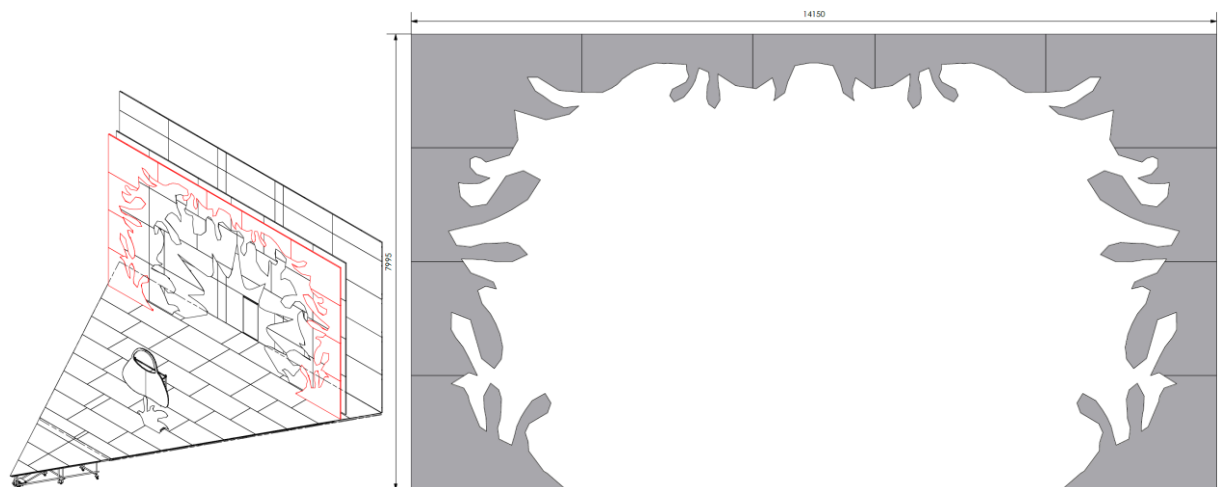
D 111126-02-50_Garden1



Drawing references

Draw. no. 111126-02-104_Garden1

E 111126-02-67_Garden2



Drawing references

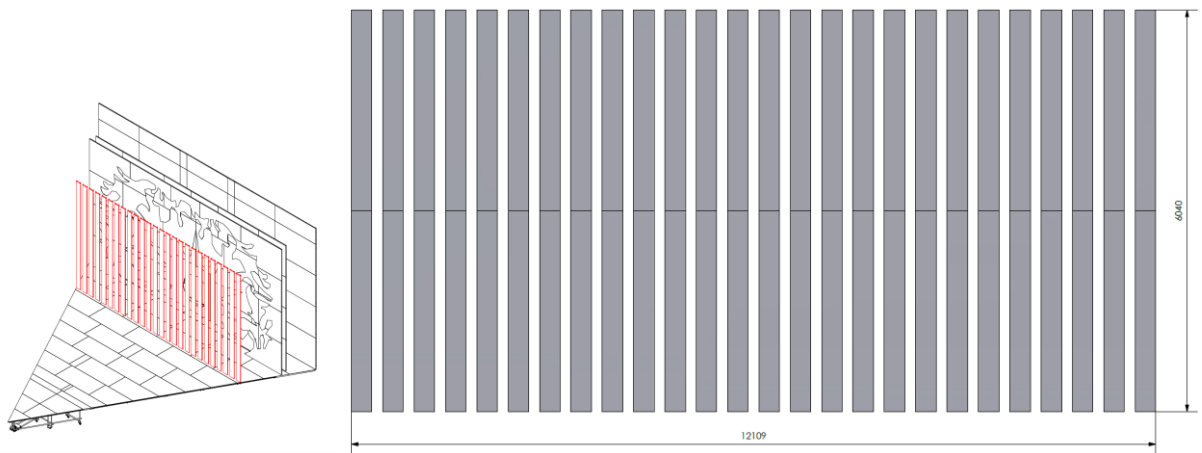


Appendix 1. Project Description and Specifications

Bunbury

Draw. no.: 111126-02-105_Garden2

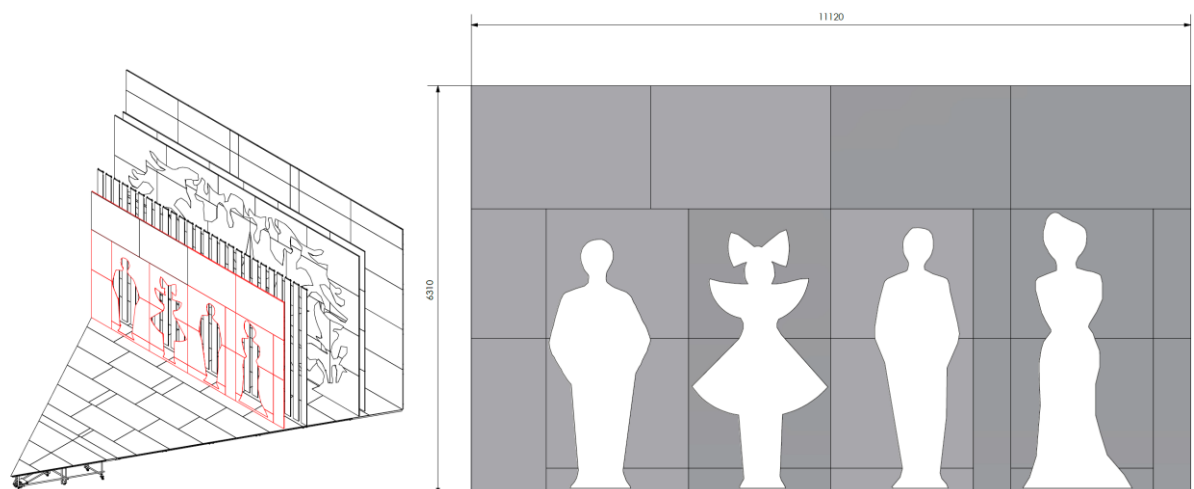
F **111126-02-81_Blinds**



Drawing references

Draw. no.: 111126-02-106_Blinds

G **111126-02-85_Silhouettes**



Drawing references

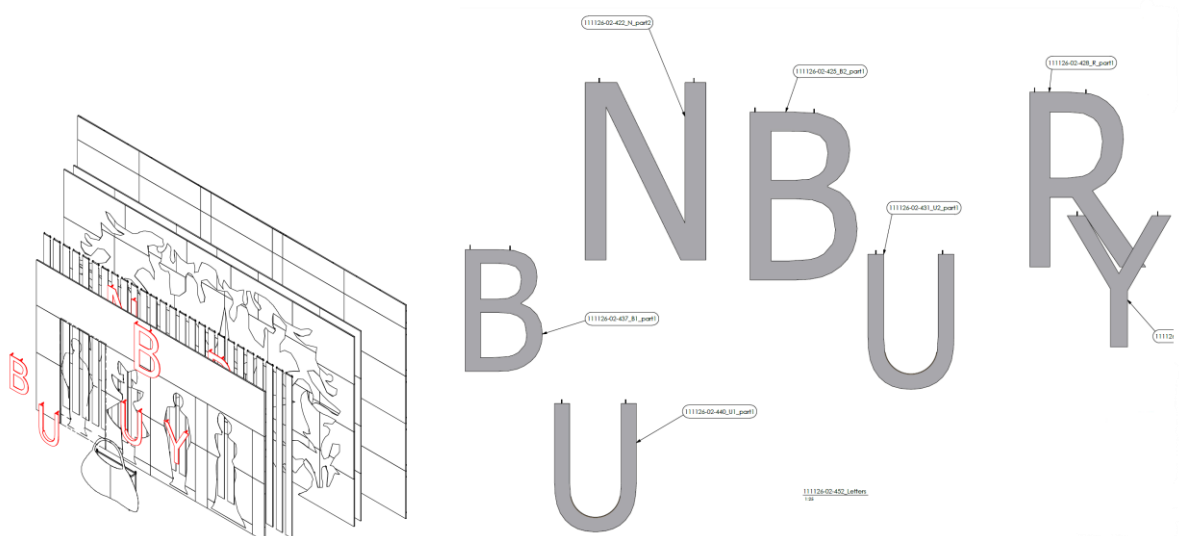
Draw. no. 111126-02-107_Silhouettes



Appendix 1. Project Description and Specifications

Bunbury

H 11126-02-452_Letters



General Description



Appendix 1. Project Description and Specifications

Bunbury

The Letters are made from 15mm birch plywood and 5,4mm recycled plastic honeycomb material. The two "U" 's has a seat made from 6mm birch plywood and a frame made of 100x40x3 mm steel.

All the letters are hung from adjustable brackets. These brackets are made of 4mm steel plate. There are two versions of this bracket. The brackets on the letters with the steel frames, have a longer top part bolted on. The brackets are bolted to the birch plywood plate first, using M10 board bolts. The 5,4mm recycled plastic honeycomb material is then mounted onto the wooden plate, hiding the boltheads.

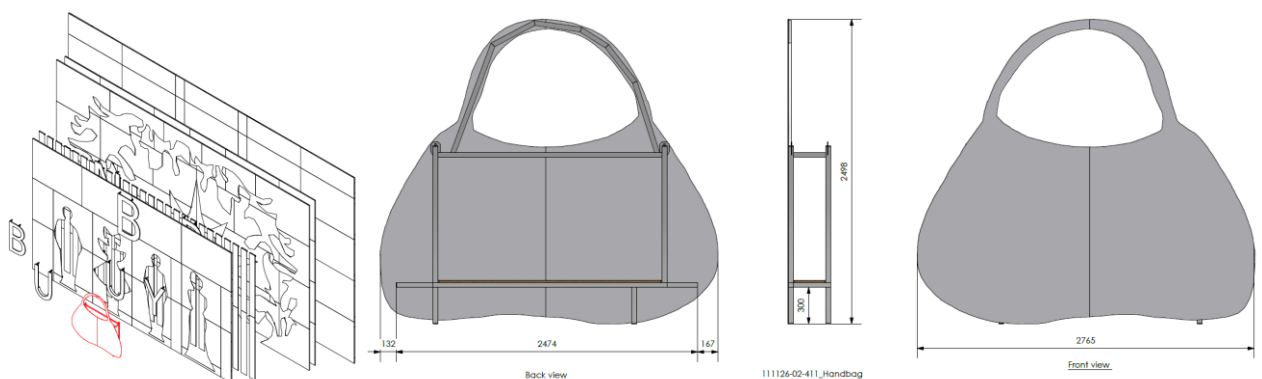
Surface

The frames are clad with 5,4mm recycled plastic honeycomb sheets attached using Velcro. These surfaces are designed to be white and suitable for projection. As an extra safety measure, a flat-head 3,5mm x 16mm screw painted in RAL 9003, must secure the sheets to the frame. All visible wood/aluminum surface must be painted in RAL 9003

Drawing references

Draw. no. 111126-02-110_Letters

I 111126-02-411_Handbag



The handbag is a basket where an actor wearing a harness can stand. The basket is hung from four points. The actor is secured, not to the basket but to the fly barre.



Appendix 1. Project Description and Specifications

Bunbury

Drawing references

Draw. no. 111126-02-111_Handbag