

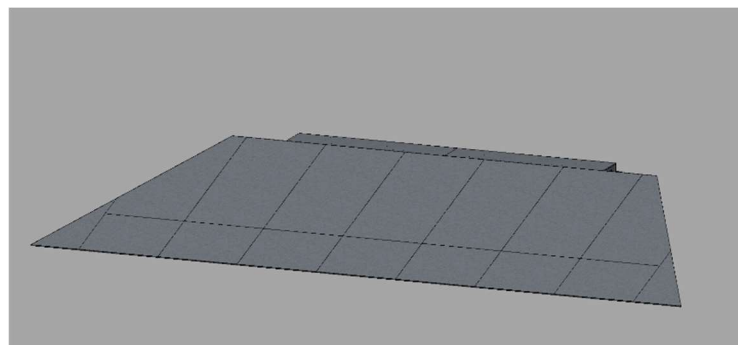
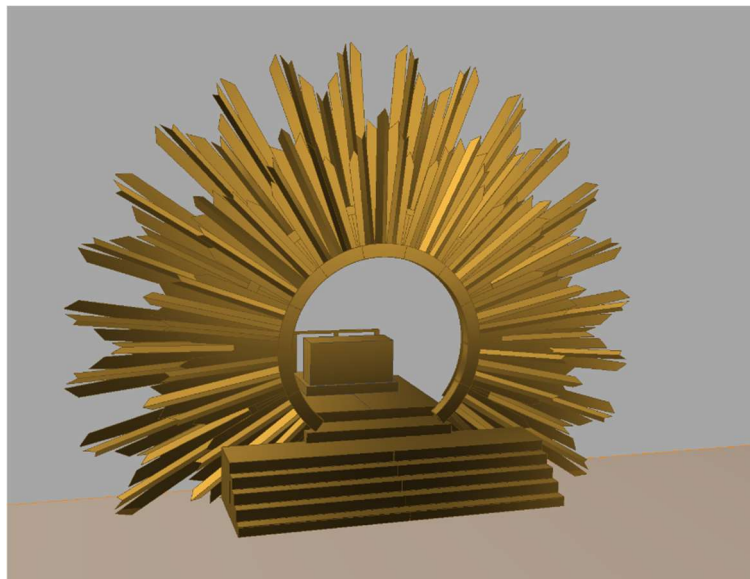
Appendix 1.

Project Description and Specifications

For the acquisition of set pieces for:

Under dybet

Reference no.: 133199



August 2023



Appendix 1. Project Description and Specifications

Under dybet

| | |
|---|--|
| 1. Project Description | 3 |
| 1.1 General Description..... | 3 |
| 1.2 Artistic Team | 3 |
| 1.3 Story Line | 3 |
| 1.4 Summary – Scenic design | 3 |
| 1.5 Set Pieces..... | 3 |
| 2. Work Process | 4 |
| 2.1 Start-up meeting | 4 |
| 2.2 Model & drawings..... | 4 |
| 2.3 Modifications | 4 |
| 2.4 Regular meetings | 4 |
| 2.5 Final supervision and pre-assembly meeting | 4 |
| 2.6 Delivery..... | 5 |
| 3. General Conditions..... | 5 |
| 3.1 Model and technical drawings | 5 |
| 3.2 Weight..... | 5 |
| 3.3 Materials..... | 6 |
| 3.4 Quality and safety | 6 |
| 3.5 Aluminium frame construction and welding..... | 7 |
| 4. Materiel deliveries by RDT..... | 8 |
| 5 Set and Stage Plan and Model Photos | 8 |
| 6. 133199-02 Angled Ramp..... | 9 |
| 7. 133199-03 Cradle/Soffit for granules | Fejl! Bogmærke er ikke defineret. |
| 8. 133199-09 DJ Podium | 10 |
| 9. 133199-10 stair podium..... | 11 |
| 10. 133199-11 Sun..... | 12 |

Read more about RDT: <https://kglteater.dk/en/about-us/about-the-theatre/the-history-of-the-royal-danish-theatre/>



1. PROJECT DESCRIPTION

1.1 General Description

The production project.

Production of set elements for the new Ballet “Under dybet”
Premiers April 20, 2024, at The Opera House, Main Stage.

The Artistic project

A performance about transitions. Dancers, a choir, and musicians on stage. New music composed by Jeanette Albeck intertwined with interpretations of pop hits.

1.2 Artistic Team

| | |
|------------------|-----------------------|
| Scenic Design | Christian Albrechtsen |
| Director | Anja Behrens |
| Lightning design | Mathias Hersland |

1.3 Story Line

Classical ballet and modern dance expressing life transformations.

1.4 Summary – Scenic design

A large golden sun with layers of radiant beams, a DJ podium and landing stairs in front.
A large 3D skull appears in act two (this element is not part of this tender).

1.5 Set Pieces

| | |
|-----------|--------------|
| 133199-02 | Angled Ramp |
| 133199-09 | DJ Podium |
| 133199-10 | Stair Podium |
| 133199-11 | Sun |



2. WORK PROCESS

2.1 Start-up meeting

A start up meeting with the production manager from RDT, covering the review of the full model, commenting in detail the specific items in the offer.

2.2 Model & drawings

All drawings apart from the PDF-version are available in the most common digital formats. Digital model created in Autodesk Inventor.

2.3 Modifications

Modifications of any kind, such as any changes to solutions or materials, which might be a subject to discussion, must be approved by the production manager at RDT and documented in writing before implementation.

2.4 Regular meetings

Regular meetings at the supplier's premises with the Production Manager and representatives from RDT and/or the Set designer. The meetings must match the production flow, planned, and scheduled to meet the quality approval on Structure and surfaces.

If RDT / the production manager or representatives after supervision meetings are concerned about the progress in the workflow according to the delivery time, the supplier must document and proof the ability to comply. The documentation must include a time schedule, milestones, and adequate staffing. In addition to these, a status report and follow-ups on the progress stated to a frequency according to agreement.

2.5 Final supervision and pre-assembly meeting

The Set must be pre-assembled (and disassembled) in full scale before delivery.

The production manager and Chief Carpenter will attend the final supervision and pre-assembly meeting, where details of the "get in" will be discussed.



2.6 Delivery

Delivery of the Set pieces for “Under dybet” to RDT will take place: no later than **07.30 AM , on the 19th of February 2024; at The Danish Royal Theatre Operaen, Ekvipagemestervej 10, 1438 Copenhagen K**

The supplier must be present upon receipt of transport.

The assembly period is 4 days, starting 19th and ending 22nd of February 2024

The supplier must provide assembly assistance on stage.

The assistance is to guide the crew at RDT, who will execute the assembly.

To ensure a smooth assembly supervision – the supervisors must be able to communicate in Danish or English.

The crew consists of 12 tech crew members and a Chief Carpenter.

Loading facilities

- The Opera/Operaen: Please notice – No access for sideload at the Opera. The loading dock for long trailer is for rear unloading.

Notice! The RDT Wagons supplied can/should be used as transport dollies.

3. GENERAL CONDITIONS

3.1 Model and technical drawings

In case of doubt - between model, photo or drawing, indications in drawings must be followed, unless specific notes prove differently.

3.2 Weight

The calculation of the total weight of all set pieces within the design process, based on material densities below:

| | | | |
|------------------|-----------------------|-----------------|-----------------------|
| Birch plywood: | 700 kg/m ³ | Poplar plywood: | 448 kg/m ³ |
| Polystyrene: | 40 kg/m ³ | Twin wall PC: | 200 kg/m ³ |
| Wood in general: | 500 kg/m ³ | | |



3.3 Materials

Birch plywood is required for certain use and specifically mentioned in drawings if so. We require Birch plywood with structural strength and quality minimum B/BB quality. Please note: All set pieces with paintwork delivered with additional paint for repairs.

3.4 Quality and safety

Ensure that all assembly and removal is possible by using a wrench, hammer, and a screwdriver only.

All bolts to be minimum M10, unless otherwise specified.

Labelling: all set pieces labelled with set piece number e.g. '111163.02.16' and weight indication.

Labels must be clear, accurate and consistent across the set.

- All hanging set pieces provided with rigging points M10.
- All rigging points used for RDT must be according to Directive 2006/42/EC, add. II A. All rigging points must have at least one bolt with lock nut bolted through the set piece.
- Use planed and bevelled wood only with no sharp edges.
- Channels in Twin Wall PC – must be closed.
- When using hollow profiles, ensure that ends are closed, and all weld seams must be smooth.
- When using laser cut steel, edges bevelled.
- All drilled holes for bolted joints in metal profiles must be oversize, for simple installation of bolts.

Welding according to DS/EN/ ISO standards equivalent:

- Steel: DS/EN/ISO 5817 equivalent
- Aluminium: DS/EN/ISO 10042:2018 equivalent; to quality level C

All material must be fire-retardant according to RDT regulations, in case of doubt please contact relevant contact person.

Packaging

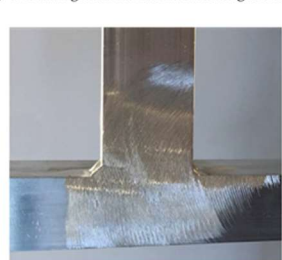
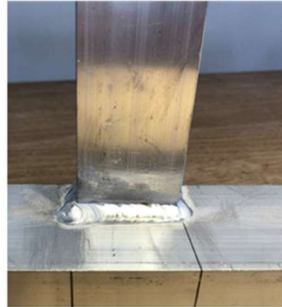
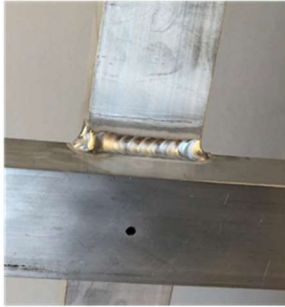
- Please insure protective and re-useable packaging for all structures and elements. The packaging must be sturdy and durable, allowing to be reused also for storage.



3.5 Aluminium frame construction and welding

All aluminium frames welded according to DS/EN/ISO 10042 equivalent to quality level C.

Welding quality and details as shown below.



1-6: TIG welding to quality level 'C'

7-8: Surface grinded for smooth mounting of twin wall



4. MATERIEL DELIVERIES BY RDT

RDT Wagons

RDT will deliver RDT Multi wagons for this production.

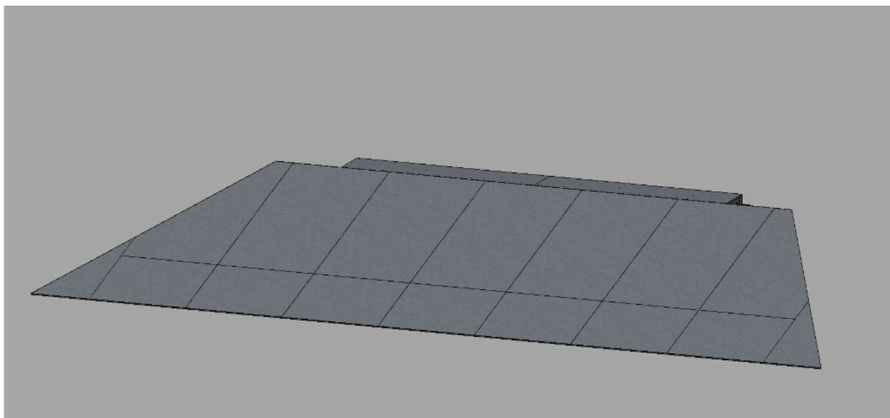
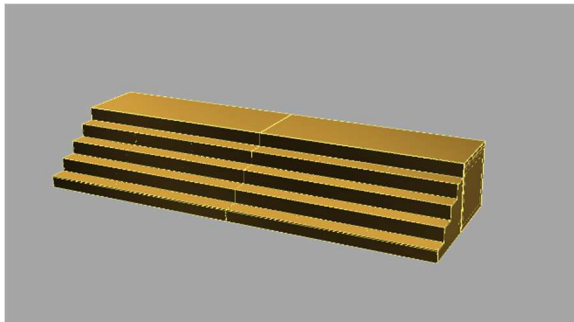
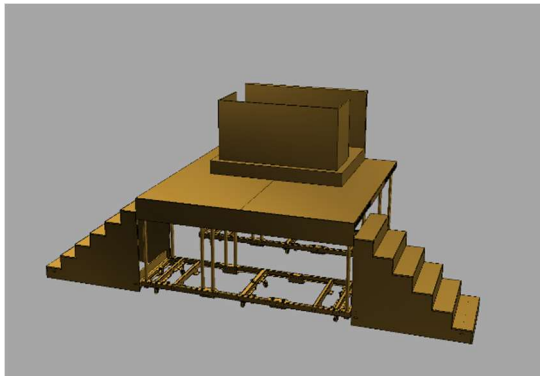
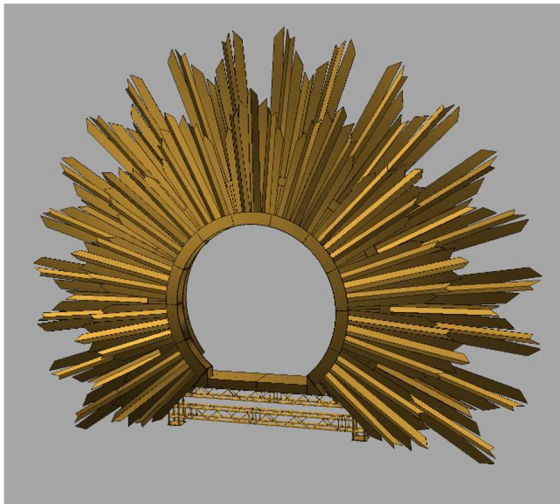
Casters/wheels

All necessary casters/wheels for the production will be delivered by RDT.

FD34 Truss

The truss elements for rigging the sun will be delivered by RDT.

5 SET AND STAGE PLAN AND MODEL PHOTOS/ ELEMENTS PHOTOS





6. 133199-02 ANGLED RAMP AND LOCKING STEP.

General Description

Ramp for artists to stand and walk down.

Structure

Aluminium frames, bolted together with a hinged frame on the back, for support. Plywood sheeting and vinyl glued on top.

Plywood step for locking tilted ramp in place on top of the “stairpodium”.

Materials

Aluminium

Plywood

Vinyl and glue.

Function Description

The frame is flown in and tilted down to be mounted on the “stairpodium”
Fly-wires must be removed before use. RDT will supply fly wires on assembly.
Approx. 30 dancers walk down the ramp.

Surface

Glued on vinyl.

Vinyl painted in Ral 1015 mat.

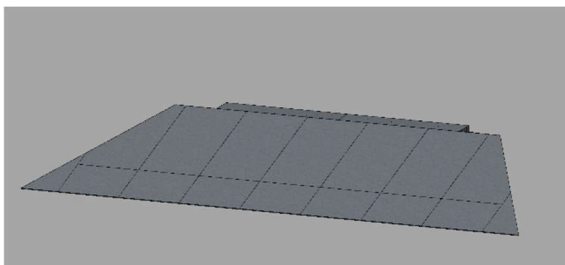
Back and sides must be painted black.

Locking step must be painted black.

Drawing references

133191-01-101_Angled ramp

133191-01-103_Locking step





7. 133199-09 DJ PODIUM

General Description

Rolling podium with staircases on two sides and a “stable for musician” on top.

Structure

Two DKT-multi wagons with podiums and a one-meter frame in between. Painted plywood on top and on the front. DKT-multiwagons, podiums and wheels are provided by RDT.

Materials

16 aluminum pipes for legs. Wooden frame as spacer and plywood as top and front surface. Two plywood staircases on each side of the podium.

Function Description

Trucked/pushed on and off stage by technicians. A musician and approx. 8 dancers on the podium while standing still.

Surface

All plywood painted, with an acrylic gloss Ral 1007 in a criss-cross pattern.

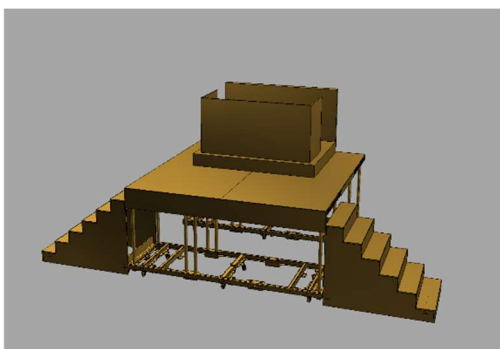
The finished surface glazed with a thin Bleichgold, pale gold 3/200 in a criss-cross pattern.

Drawing references

133191-02-42_Podium for musician

133191-02-20_Staircase on wheels

133191-02-47_Stable for musician





8. 133199-10 STAIR PODIUM

General Description

A 6x2 meter rolling staircase.

Structure

Two DKT-multiwagons with CNC cut, plywood staircase on top, and two DKT-Multiwagons with podiums and plywood on top, front and ends. DKT-multiwagons, wheels and podiums are provided by RDT.

Materials

16 aluminum pipes for legs.

Two plywood staircases.

Plywood sheeting on podiums.

Function Description

Trucked/pushed on and off stage by technicians. Approx. 12 dancers on the podium while standing still.

All 4 units to be locked together as one unit.

Surface

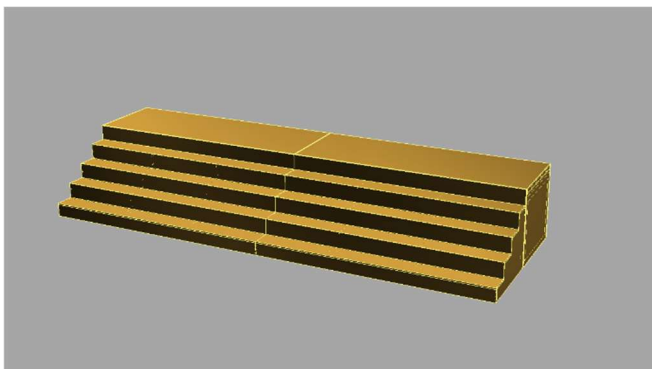
All plywood painted, with an acrylic gloss Ral 1007 in a criss-cross pattern.

The finished surface glazed with a thin Bleichgold, pale gold 3/200 in a criss-cross pattern.

Drawing references

133191-01-102_three meter staircase

133191-02-103_three meter podiums





9. 133199-11 SUN

General Description

Flying element that stands on the floor, but still connected to fly bars, when down.
Artists walk through it.

Structure

A FD34 truss with plywood sheeting and 6 mm twin wall PC sheets folded and sticking out.
Plywood skirts to hide PC ends and build in lamps.
FD34 truss. Build from standard pieces + a custom-made piece at the top section. (Provided by RDT)

Materials

Plywood (on the front and back of truss, mounted with half couplers)
6mm twin wall PC (cut, folded, and mounted onto plywood)

Function Description

Is flown in and out. Stands on floor when down.

Surface

The twin wall PC sheets must have closed channels to prevent fire and sharp edges.

The front surface primed and then painted with an acrylic gloss Ral 1007.

The backside of PC sheets must be painted black.

The “Background sun ray sheets” (PC) is to be painted with bronze powder bleichgold pale gold 3/200 and sprinkled with a lackbronze powder hochglanz reichbleichgold.

The “Front sun ray sheets” (PC) is to be painted with a lackbronze powder hochglanz reichbleichgold and sprinkled with bleichgold pale gold 3/200.

High gloss, 20mm chrome gold foil is to be mounted at specific places.

All plywood must be painted directly, with an acrylic gloss Ral 1007 in a criss-cross pattern.
The finished surface glazed with a thin Bleichgold, pale gold 3/200 in a criss-cross pattern.



Drawing references

133191-02-100_Alter sun

133191-02-101_Front sun ray sheets

133191-02-102_Background sun ray sheets

