

Appendix 6. Sample requirements

Aida

Reference no.: 122101

Samples

1. Surface - Floor and Walls

We require a painted canvas sample to comply with the description and reference photos from the set designer of the surface.

The set designer has defined the set painting for floor and walls in the notes below:

AIDA set painting

I would like the walls of the set to look like concrete walls that used to be completely gold, but with time the gold has started to come off/peeled/cracked so the concrete underneath is revealed.

This represents a political regime of extreme wealth and power (opulent gold walls) that is now corrupted and crumbling (Russian oligarchs, Saddam Hussain, Donald Trump etc.).

Here are some references for the set paint effect I would like to achieve.

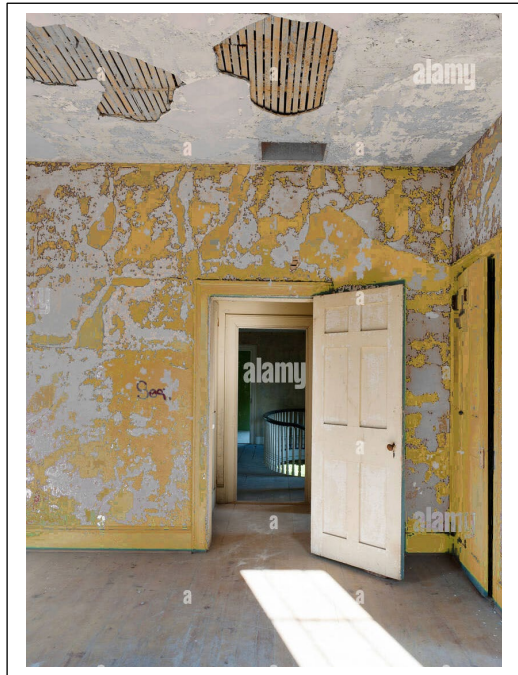
The first two images show the scale and amount of gold I would like to have on the walls:





THE ROYAL DANISH THEATRE

Scenic Design



The pictures below for details.



The painting sample must be approx. 2*3 meters.
We need your cooperation in dealing with the description above and the fact that there are approx. 600 square meters of the same surface– with regards towards a balanced pricing and budget responsibility.

For the same reason the sample must be presented with a time consumption per square meter and a description of the painting process for both floor and walls.

Evaluation criteria:

Our evaluation will be a visible inspection and the match to the description and reference photos.

Our evaluation will furthermore concern the description of your process for floor and walls and the time consumption needed.

We will furthermore assess the surface in the perspective of use.

2. Rock Wall.

We require a painted sample of the rock wall minimum size 1*1 meter of the surface

The sample is to comply roughly with the model photos.

The set designer is set to have a standard element/type if this can keep the pricing down.

Under all circumstances the surface itself must not exceed 3 kg/square meter.





Evaluation criteria:

Our evaluation will be a visible inspection of the match to the reference photos.

Our evaluation will furthermore concern the weight and the quality of the surface and resistance to comply with a multiple set- up and knock -down.