

THEATRE PLAN

31 Colonnade London WC1N 1JA
Telephone +44 20 7841 0440 www.theatreplan.com

Denmark Copenhagen Playhouse Theatre

Stage Engineering

Electrical Drive Layout for Primary Podiums - Basement Machine Rooms - Plan Layout

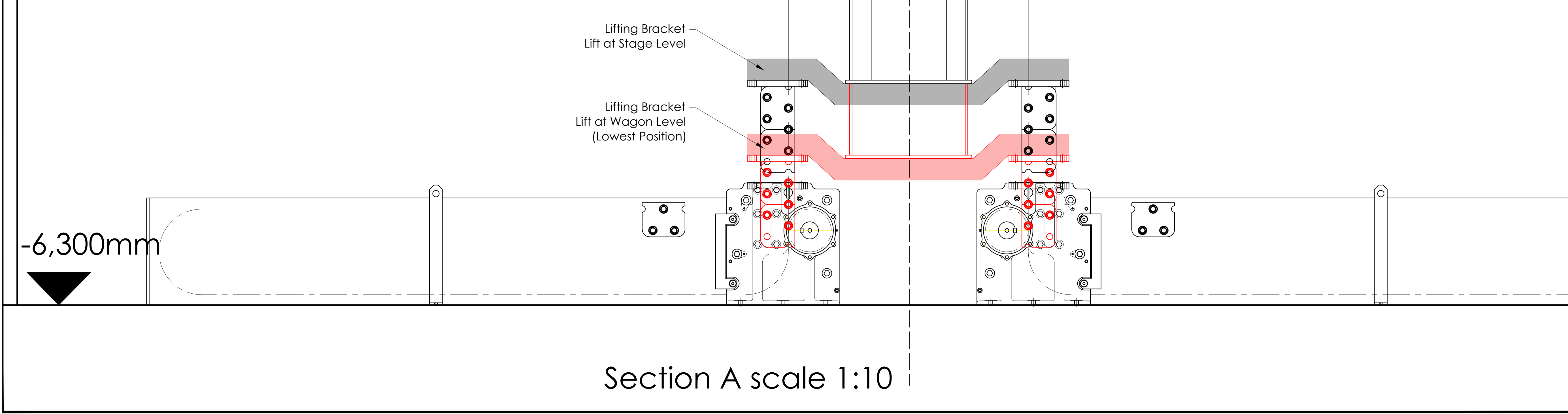
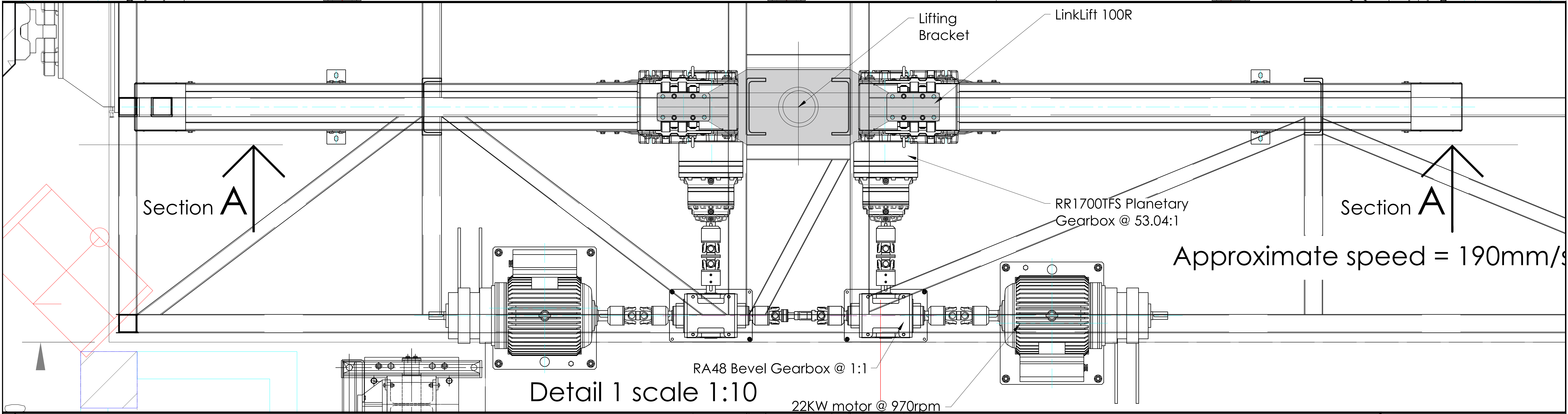
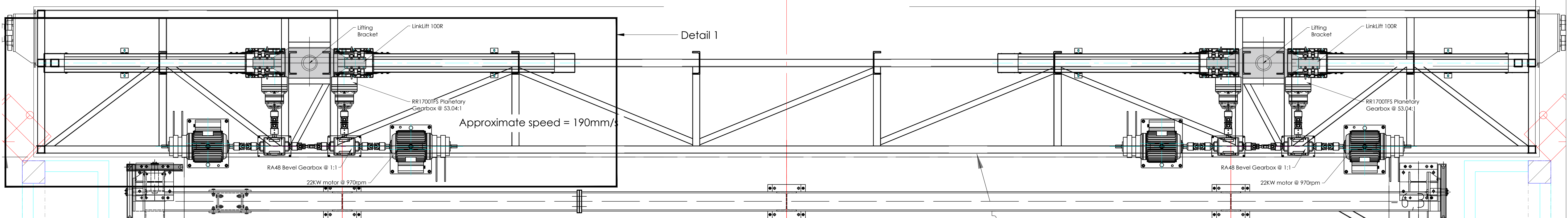
Scale	Drawn	Checked
1:50 @ A1	CO	--

RIBA STAGE -

-	Updated to reflect existing door positions to machine rooms	CO 2021-11-30
-	Initial issue	CO 2021-11-11

DCPT 738-THP-01-XX-DR-OT-01-5-07

Plan Scale 1:25 @A1



THEATRE PLAN

31 Colonnade London WC1N 1JA
Telephone +44 20 7841 0440
www.theatreplan.com

Denmark Copenhagen Playhouse Theatre

Stage Engineering

Electrical Drive Layout for Backdrop Elevator -
Basement Machine Room - Plan & Section Layout

Scale	Drawn	Checked
1:25 and 1:10 @ A1	CO	--

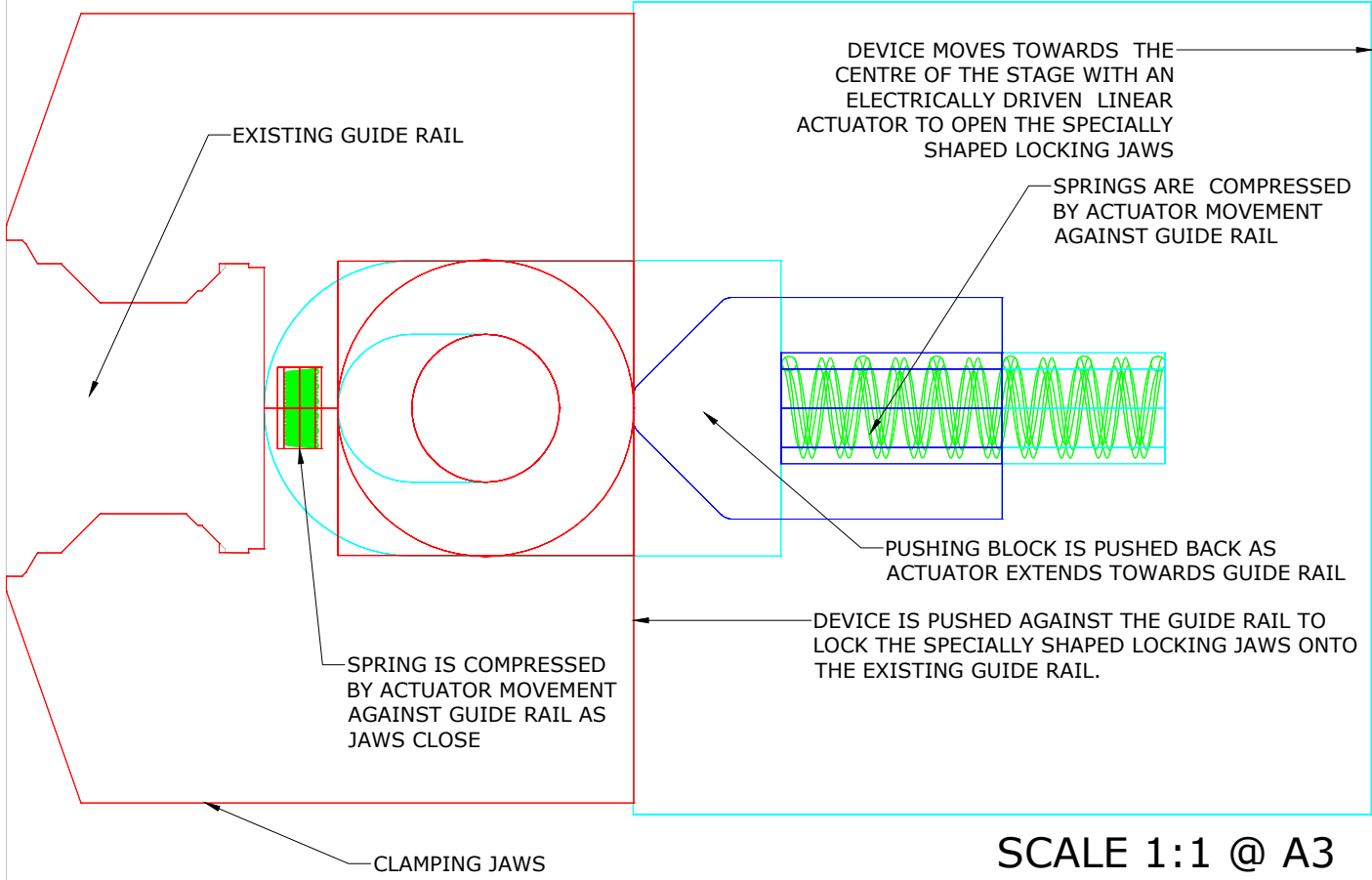
RIBA STAGE -

Updated for Tender

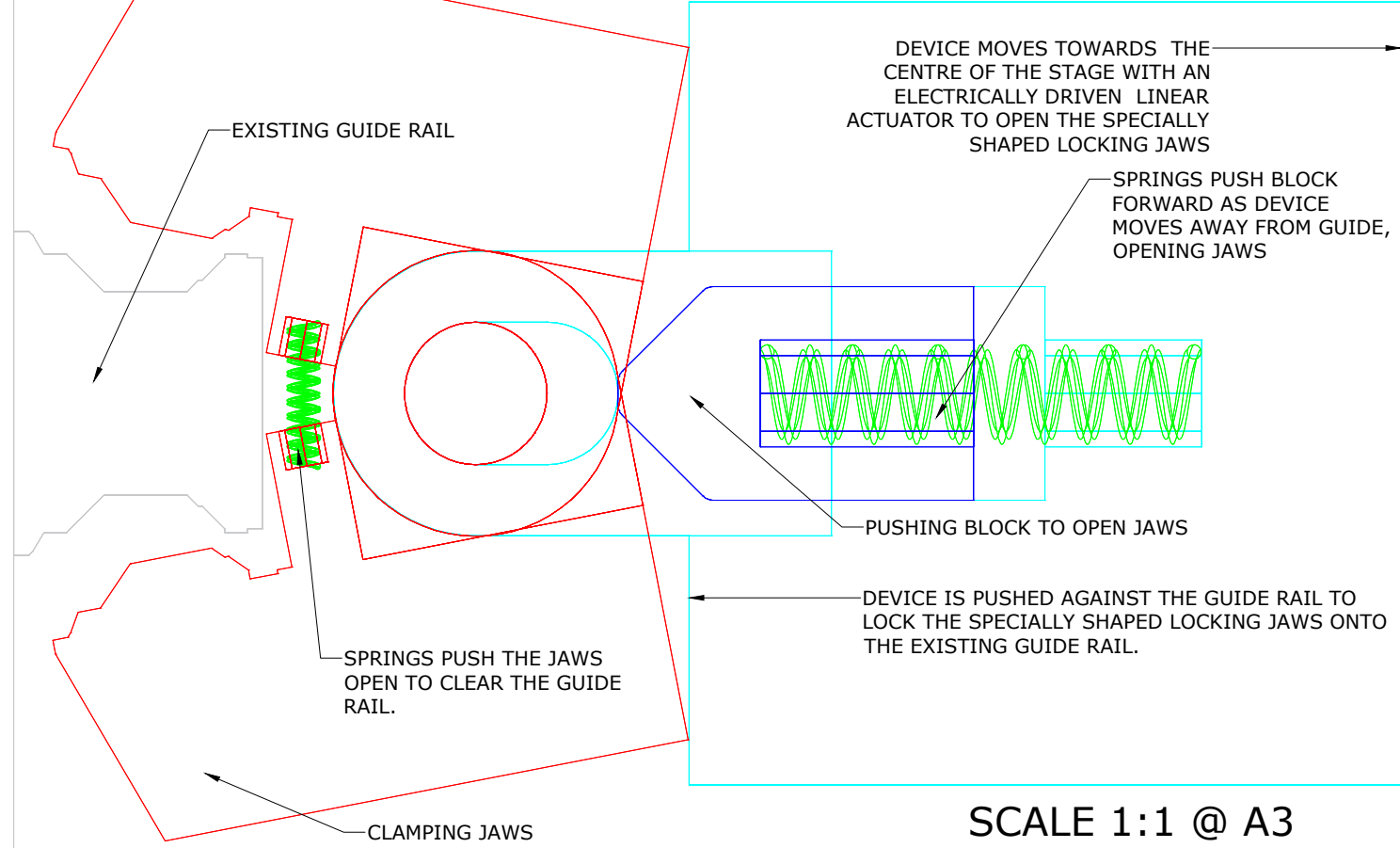
CO 2021-11-11

DCPT 738-THP-01-XX-DR-OT-01-5-08

PLATFORM LOCKING DEVICE IN LOCKED POSITION
WIRE FRAME PLAN VIEW



PLATFORM LOCKING DEVICE IN UNLOCKED POSITION
WIRE FRAME PLAN VIEW

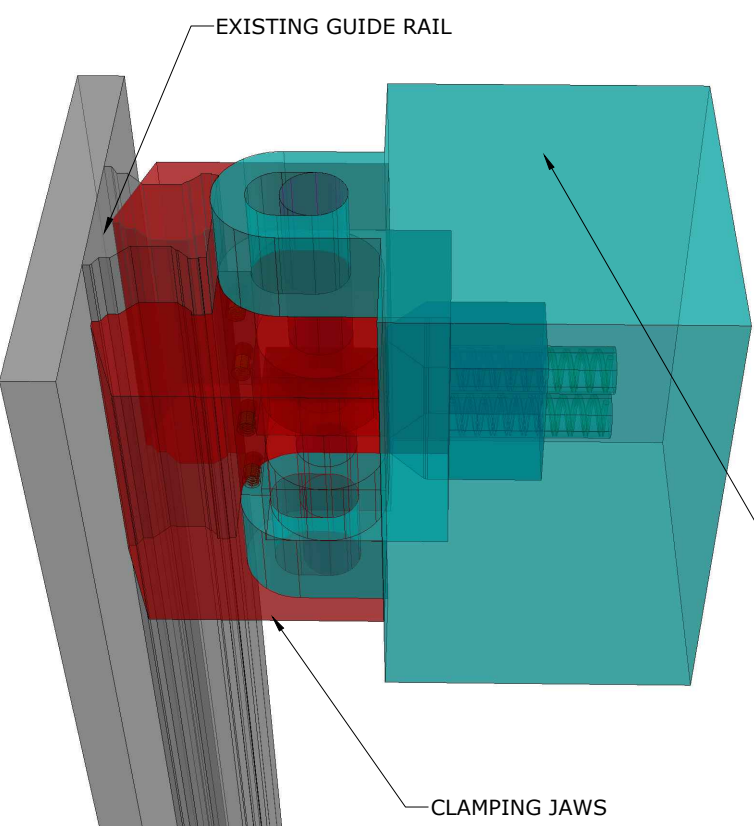


THE PICTURED DEVICE IS MOUNTED AS HIGH AS POSSIBLE TO THE TOP OF THE PODIUM, ONE AT EACH END OF EACH PODIUM, WITH A LINEAR ACTUATOR TO MOVE HORIZONTALLY. WHEN THE PODIUM IS STATIONARY AT ANY LEVEL BELOW STAGE LEVEL THE DEVICE IS PUSHED OUT AGAINST THE EXISTING GUIDE RAIL AND THE SPECIALLY SHAPED JAWS LOCK ONTO THE RAIL. WHEN THE PODIUM IS TO BE MOVED TO ANY POSITION BELOW STAGE LEVEL THE ACTUATOR RETRACTS BY APPROXIMATELY 10mm WHICH OPENS THE JAWS CLEAR OF THE GUIDE RAIL. THE PODIUM MOVES AND IS GUIDED BY THE LOWER GUIDE SHOES AS IT IS CURRENTLY. ONCE AT THE DESIRED LEVEL POSITION THE ACTUATOR IS PUSHED OUT AGAIN AND LOCKS BACK ONTO THE GUIDE RAIL.

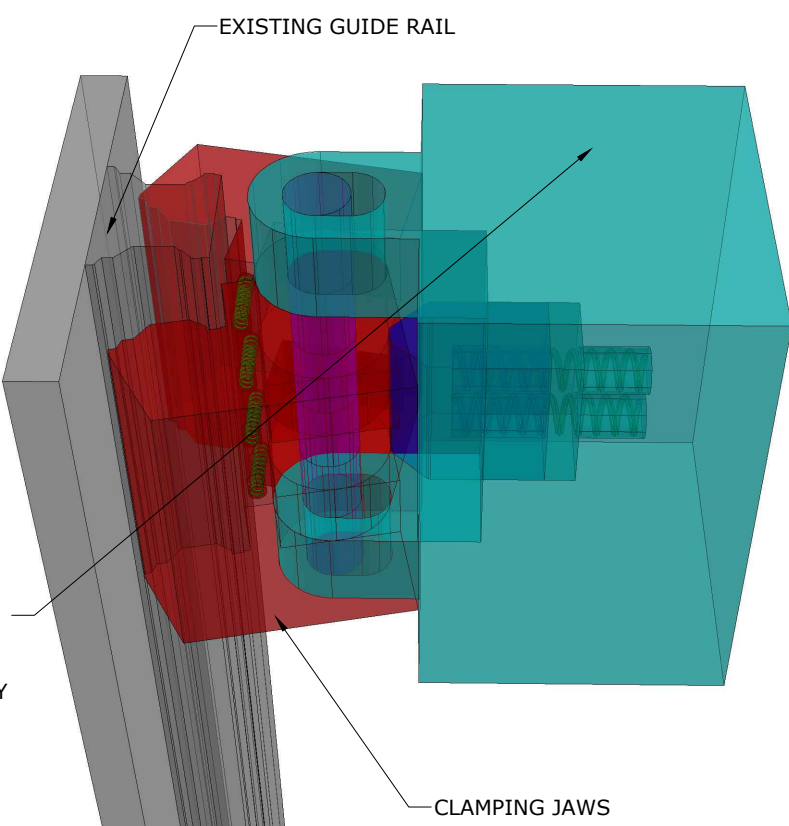
IF THE PODIUM IS TO BE MOVED ABOVE THE STAGE LEVEL THE ACTUATOR RETRACTS (MOVES TOWARDS CENTRE STAGE) BY APPROXIMATELY 250mm WHICH WILL AUTOMATICALLY OPEN THE JAWS AND THEN MOVE THE DEVICE ONSTAGE OF THE PODIUM EDGE CLEAR OF THE FIXED STAGE FLOOR. ONCE THE ACTUATOR HAS MOVED THE DEVICES TO A SAFE POSITION THE PODIUM MAY BE MOVED ABOVE THE STAGE LEVEL. AT ANY POSITION ABOVE THE STAGE LEVEL, AND DURING ALL MOVES (ABOVE OR BELOW THE STAGE), THE PODIUM WILL BE GUIDED ONLY BY THE EXISTING GUIDE SET.

WE THINK THAT THESE NEW LOCKING DEVICES ALONG WITH THE LOCKS ON THE HYDRAULIC RAM WILL STOP THE PODIUM FROM MOVING HORIZONTALLY AND VERTICALLY.

PLATFORM LOCKING DEVICE IN LOCKED POSITION
PERSPECTIVE VIEW



PLATFORM LOCKING DEVICE IN UNLOCKED POSITION
PERSPECTIVE VIEW



DEVICE MOVES TOWARDS THE CENTRE OF THE STAGE WITH AN ELECTRICALLY DRIVEN LINEAR ACTUATOR TO OPEN THE SPECIALLY SHAPED LOCKING JAWS

SCALE: NTS

THEATRE
PLAN

31 Colonnade London WC1N 1JA
Telephone +44 20 7841 0440
www.theatreplan.com

Denmark Copenhagen Playhouse Theatre
Stage Engineering

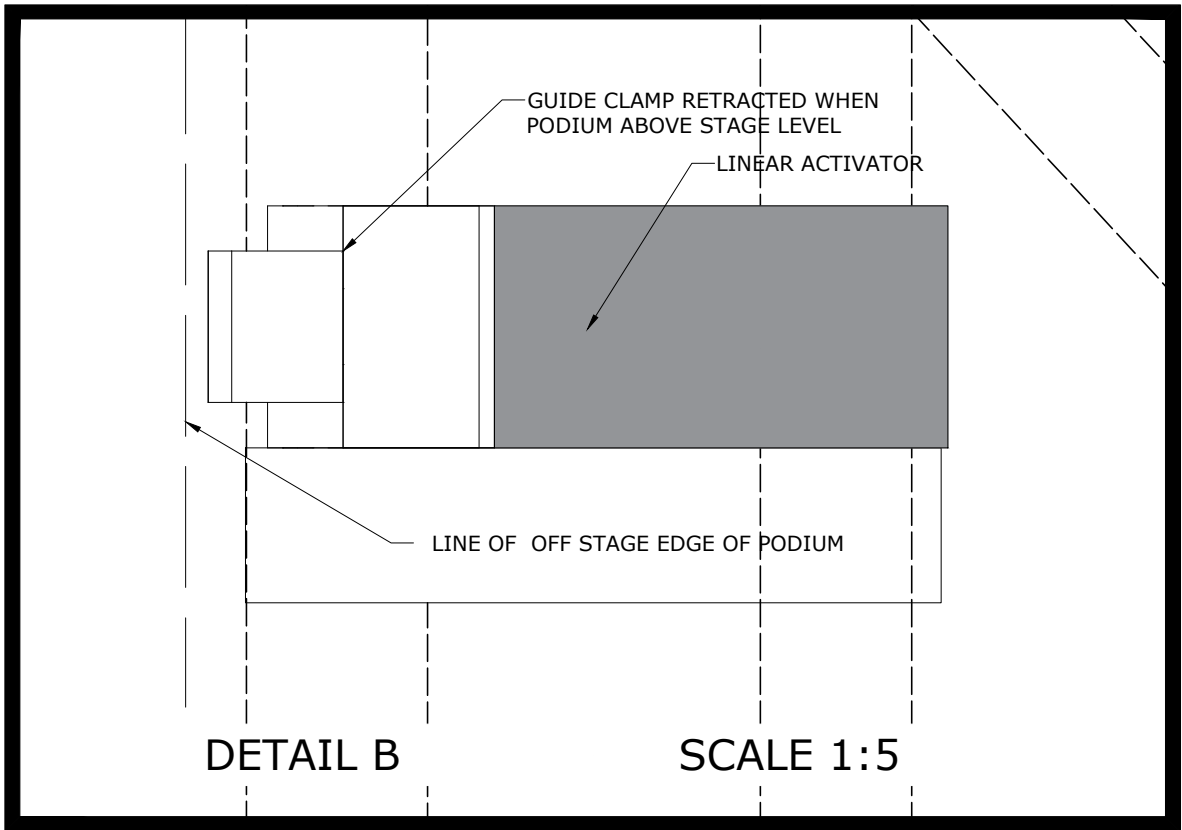
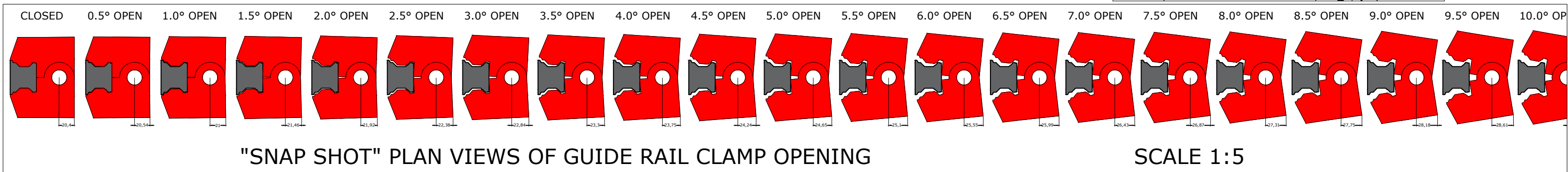
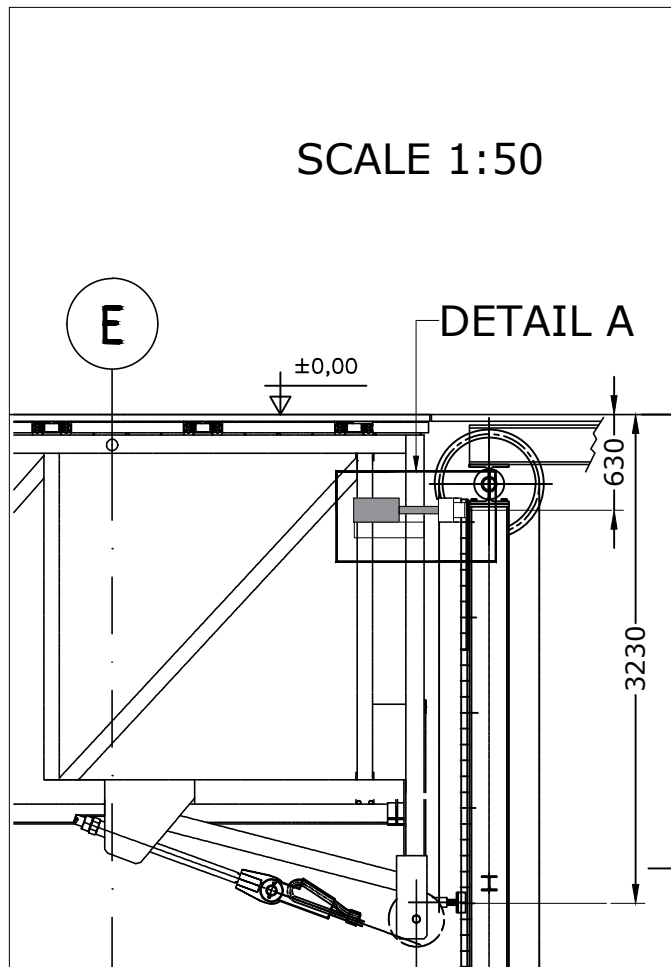
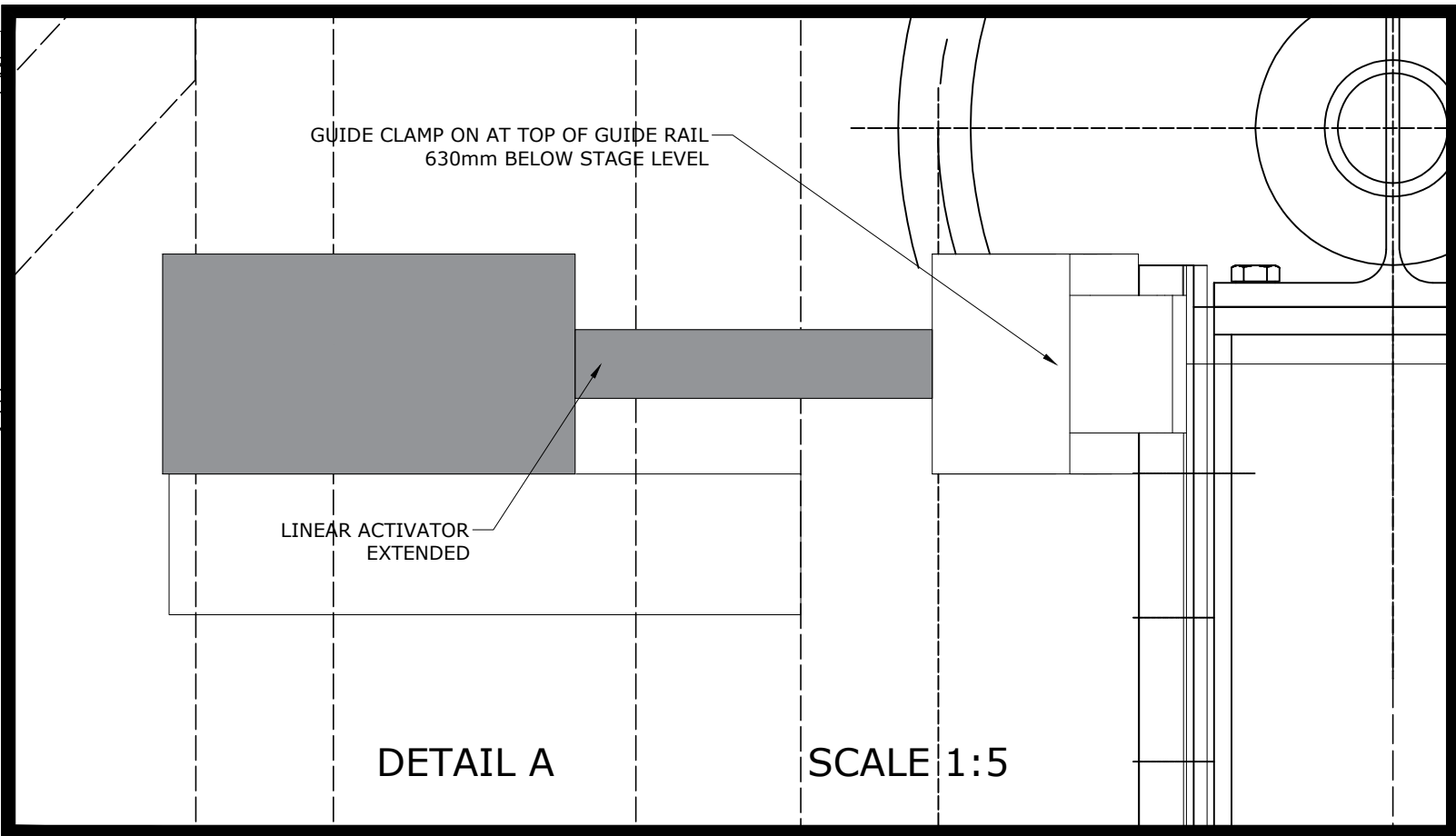
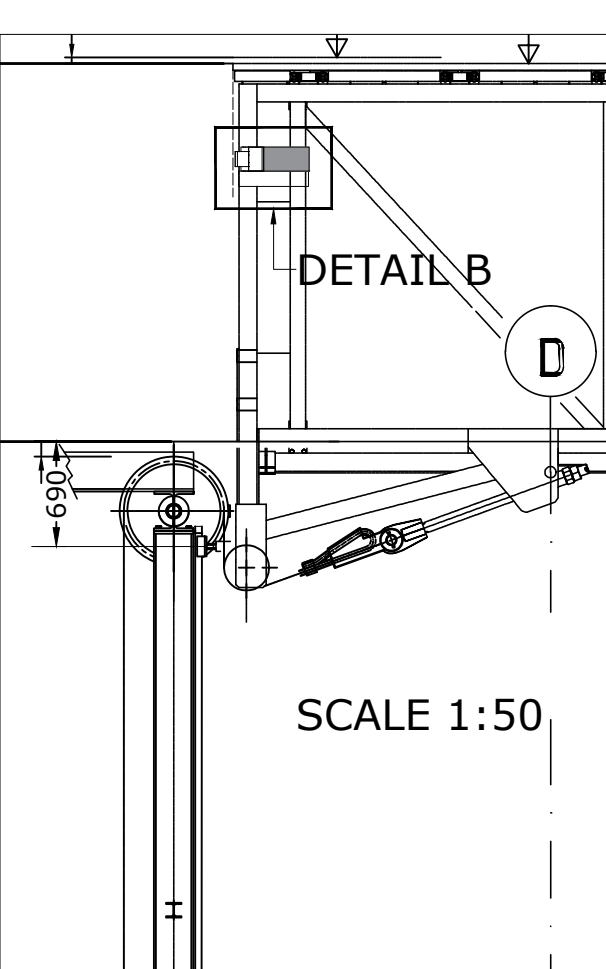
Additional Locking Devices - Primary Podiums

Scale	Drawn	Checked
1:1@ A3	CO	--

RIBA STAGE -

-	Initial Issue	CO 2020-12-07
1	Tender Issue	CO 2020-12-09
-	-	-
-	-	-

DCPT 738-THP-01-XX-DR-OT-01-5-01.1



THEATRE PLAN

31 Colonnade London WC1N 1JA
Telephone +44 20 7841 0440 www.theatreplan.com

Denmark Copenhagen Playhouse Theatre
Stage Engineering

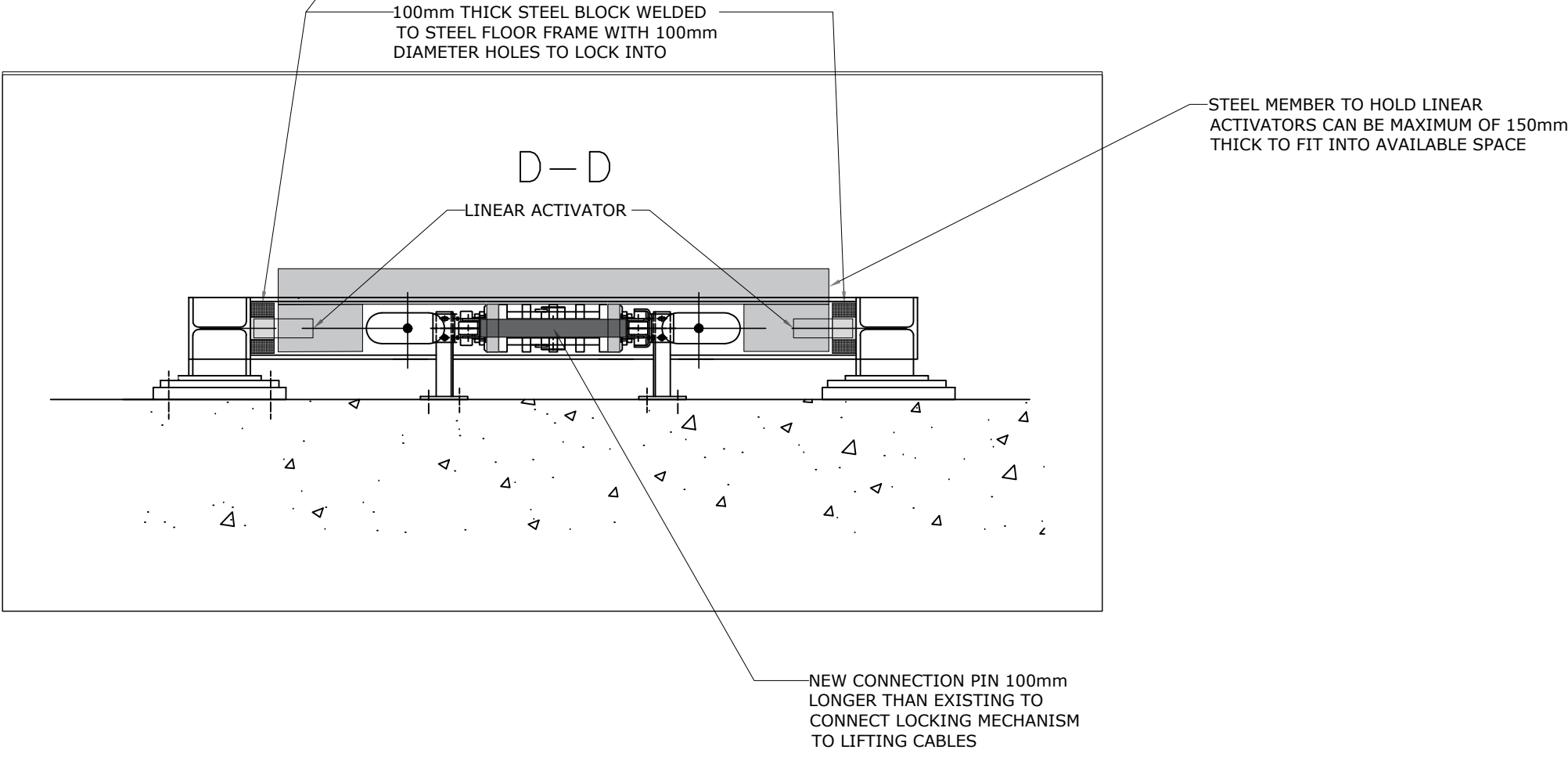
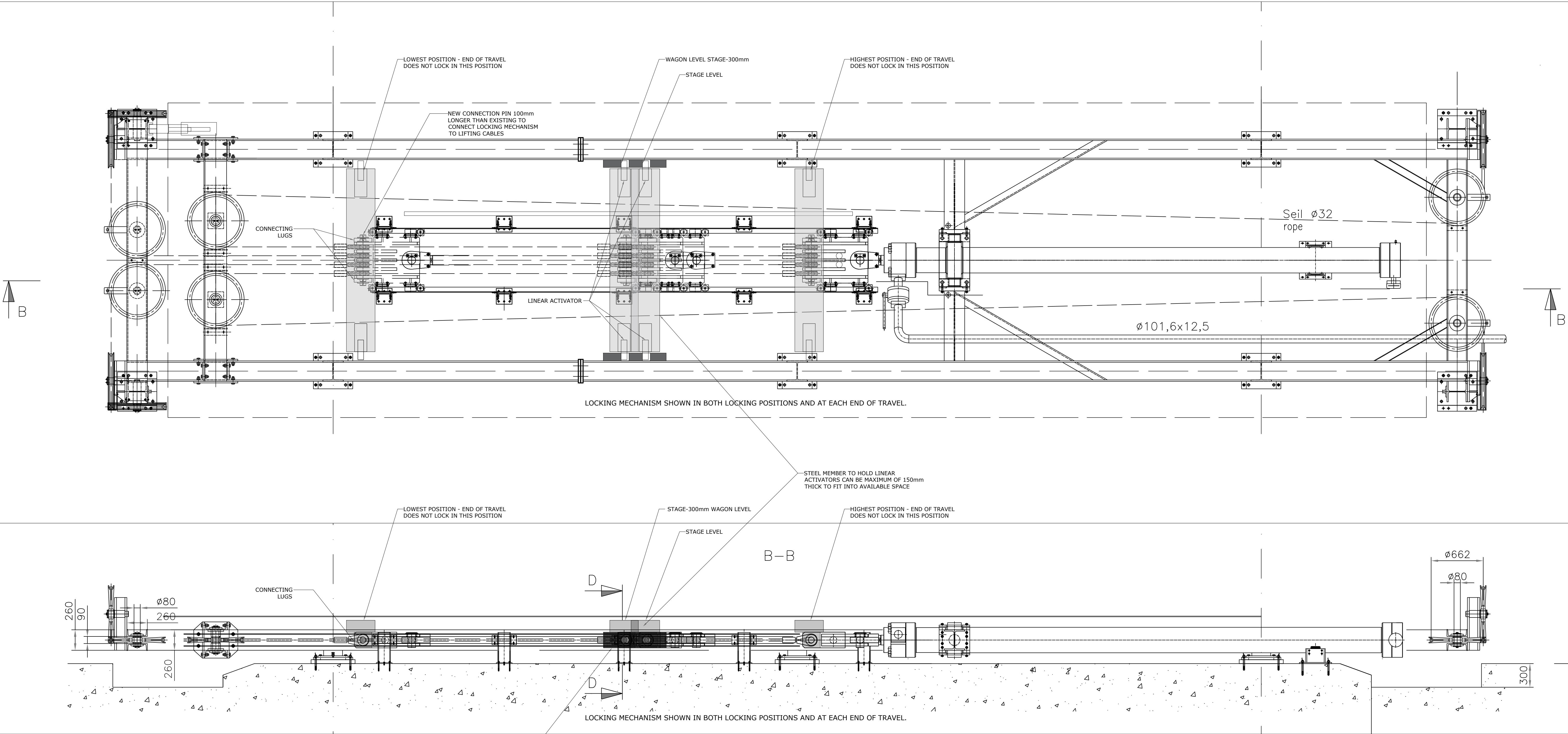
Additional Locking Devices - Primary Podiums
Section and Plan Details

Scale	Drawn	Checked
1:50 - 1: 5 @ A3	CO	--

RIBA STAGE -

-	Initial Issue	CO 2020-12-07
1	Tender Issue	CO 2020-12-09
-	-	-
-	-	-

DCPT 738-THP-01-XX-DR-OT-01-5-02.1



THEATRE PLAN

31 Colonnade London WC1N 1JA
Telephone +44 20 7841 0440
www.theatreplan.com

Denmark Copenhagen Playhouse Theatre

Stage Engineering

Stage Level and Wagon Level locks - Primary Podiums
Section and Plan Details

Scale	Drawn	Checked
1:25 @ A1	CO	--

RIBA STAGE -

-	Initial Issue	CO 2020-12-07
1	Tender Issue	CO 2020-12-09
-	-	-
-	-	-

DCPT 738-THP-01-XX-DR-OT-01-5-03.1

File Name: Primary Podiums Locking Devices Rev 1.dwg © THEATREPLAN