

Appendix 6.

Sample requirements

Ballo in Machera

Reference no.: 122065

Samples:

Please notice – all samples must be provided with the name of the tenderer.

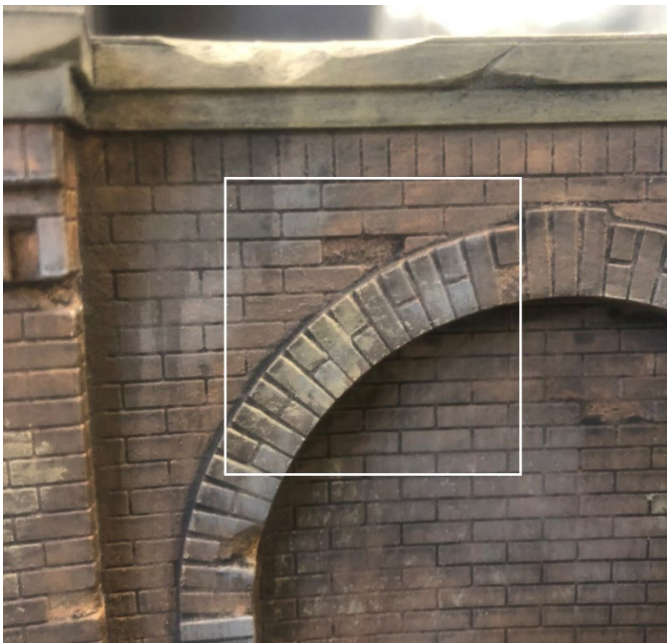
Surface and paint samples

1. 122065-02 Brick Wall Cladding with milled grooves/3D structure

We require a sample of the cladding of the Brick Wall. The wall section is made of 18mm plywood bracings.

These are fixed with 43 x 21mm wood.

This is then cladded with 6mm plywood.



The sample approx. 80*80 cm, must include a missing brick, the standard horizontal brickwork and a section of the protruding arch.

The sample painted to resemble a surface of an old castle brick wall according to photo. The sample will be used in the dialogue with the set designer for

approval of the final painting.

For reference see App 1, section 7.

Evaluation criteria:

Our evaluation will concern the naturalistic/authentic look of an old castle brick wall and the brick work. The milled grooves/ 3D structure will be decisive.

Supplementary samples with alternative solutions provided by the tenders will be considered.

2. 122065-05 Warehouse backwall
Wood cladding and polycarbonate window with cracks

- a) We require a sample approx. 80*80 cm of the wooden cladding with visible slots in the vertical part, also showing the recess in the framework.
- b) And a part of the top window approx. 80*50 cm with two arched windows with cracks and patina.





THE ROYAL DANISH THEATRE

Scenic Design



For reference see App 1, section 10.

Evaluation criteria:

Our evaluation will concern the authentic look of the old and worn wall parts, the realistic look of the slots and true impression of the faded/dirty paint will be decisive; as well as the cracks and the tinting of the windows.

3. 122065-03 The Box



We require a sample approx. 50 x80 cm of the wooden cladding of The Box exterior with profiles, gold paint and ornamental painting.

For reference see App 1, section 8.

Evaluation criteria:

Our evaluation will concern resemblance to the photos of the model.; the quality of the gold, and ornamental, and the appearance of the pillars.