

Appendix 1.  
**Project Description and Specifications**

For the acquisition of set pieces for:  
**HAMLET, PRINCE OF DENMARK**

**Reference no.: 111163**



January 2020



## HAMLET, PRINCE OF DENMARK

---

<b>1. Project Description .....</b>	<b>3</b>
1.1 General Description .....	3
1.2 Artistic Team .....	3
1.3 Story Line .....	3
1.4 Summary – Scenic design .....	3
1.5 Set Pieces .....	4
<b>2. Work Process .....</b>	<b>4</b>
2.1 Start-up meeting .....	4
2.2 Model & drawings .....	4
2.3 Modifications .....	4
2.4 Regular meetings .....	4
2.5 Final supervision and pre-assembly meeting .....	5
2.6 Delivery .....	5
<b>3. General Conditions .....</b>	<b>5</b>
3.1 Model and technical drawings .....	5
3.2 Weight .....	6
3.3 Materials .....	6
3.4 Quality and safety .....	6
3.5 Aluminium frame construction and welding .....	7
<b>4. Materiel deliveries by RDT .....</b>	<b>8</b>
<b>5 Set and Stage Plan and Model Photos .....</b>	<b>10</b>
<b>6. 111163-01 walls .....</b>	<b>15</b>
<b>7. 111163-02 Floor .....</b>	<b>21</b>

Read more about RDT: <https://kglteater.dk/en/about-us/about-the-theatre/the-history-of-the-royal-danish-theatre/>



## HAMLET, PRINCE OF DENMARK

---

### 1. PROJECT DESCRIPTION

#### 1.1 General Description

Hamlet, Prince of Denmark is performing at our Main Stage in the Royal Playhouse in the 2020/2021 season.



The show will be touring large cultural houses in Denmark with 6-8 performances. Please note that the project has been prepared for ease of assembly, packing and transport. Please be observant of these conditions.

Hamlet, the greatest tragedy in the world of drama; actualized with a young talented actor in the title role. Morten Kirkskov's staging is a "breaking bad" story. This interpretation focusses on the individual's right, on the personal level resorting power with weapons.

#### 1.2 Artistic Team

Scenic Design	Philipp Fürhofer
Costume Design	Karin Betz
Director	Morten Kirkskov
Lightning design	Ulrik Gad

#### 1.3 Story Line

The young prince Hamlet is studying humanism in Wittenberg. The ghost of his father asks him to return to Denmark to avenge his death. The deceased king claims that his brother, Hamlet's uncle Claudius killed him, and subsequently married Hamlet's mother and overtook the throne.

Hamlet returns to Denmark and due to these conflicts, both Hamlet and the morality of the entire young generation is corrupted and almost everyone becomes murderers. Not even Hamlet's love affair with Ofelia survives and Ofelia eventually commits suicide.

The ongoing escalation of intrigues causes the death of everyone except Hamlet's friend Horatio. Written by William Shakespeare and published in 1603.

#### 1.4 Summary – Scenic design

The objective is to create a kaleidoscopic 'mess', an illusion mixing reality and reflections.



## HAMLET, PRINCE OF DENMARK

---

Four large L shaped walls accomplish this. The walls/ wall corners with castle interior (doors, windows & panels) on one side and mirrors on the reverse. The walls are moveable and they can spin around a centre point in the corner.

This enables a big variety of placement/views.

Extras/stage crew will move the walls manually to 17 different positions, constant movements (as silently as possible).

The Mirror is a foil with 'spy mirror' effect when lit.

There will be video projections from four positions.

### 1.5 Set Pieces

111163-01 Walls, 4 pcs.

111163-02 Floor

"

## 2. WORK PROCESS

### 2.1 Start-up meeting

A start up meeting with the production manager from RDT, covering the review of the full model, commenting in detail the specific items in the offer.

### 2.2 Model & drawings

The model will be available to the supplier during the production period.

All drawings apart from the PDF-version are available in the most common digital formats.

Digital model created in Autodesk Inventor.

### 2.3 Modifications

Modifications of any kind, such as any changes to solutions or materials, which might be a subject to discussion, must be approved by the production manager at RDT and documented in writing before implementation.

### 2.4 Regular meetings

Regular meetings at the supplier's premises with the Production Manager and representatives from RDT and/or the Set designer. The meetings must match the production flow, planned and scheduled to meet the quality approval on construction and surfaces.



## **HAMLET, PRINCE OF DENMARK**

---

If RDT / the production manager or representatives after supervision meetings are concerned about the progress in the workflow according to the delivery time, the supplier must document and proof the ability to comply. The documentation must include a time schedule, milestones, and adequate staffing. In addition to these, a status report and follow-ups on the progress stated to a frequency according to agreement.

### **2.5 Final supervision and pre-assembly meeting**

The Set must be pre-assembled (and disassembled) in full scale before delivery.

The production manager and Chief Carpenter Main Stage Playhouse, will attend the final supervision and pre-assembly meeting, where details of the “get in” will be discussed.

### **2.6 Delivery**

Delivery of the Set pieces for “HAMLET, PRINCE OF DENMARK” to RDT will take place: no later than

**7.30 AM , on the 27th of may; at The Danish Royal Theatre**

**Skuespilhuset, Sankt Annæ Plads 36, 1250 Copenhagen K**

The supplier must be present upon receipt of transport.

**The assembly period is 3 days, starting 27th on May 2020 and ending 29<sup>th</sup> of May 2020.**

The supplier must provide assembly assistance on stage.

The assistance is to guide the crew at RDT, who will execute the assembly.

To ensure a smooth assembly supervision – the supervisors must be able to communicate in Danish or English.

The crew of the RDT: Skuespilhuset consists of 8 tech crew members and a Chief Carpenter.

## **3. GENERAL CONDITIONS**

### **3.1 Model and technical drawings**

In case of doubt - between model, photo or drawing, indications in drawings must be followed, unless specific notes prove differently.



## HAMLET, PRINCE OF DENMARK

---

### 3.2 Weight

The calculation of the total weight of all set pieces within the design process, based on material densities below:

Birch plywood:	700 kg/m <sup>3</sup>	Poplar plywood:	448 kg/m <sup>3</sup>
Polystyrene:	40 kg/m <sup>3</sup>	Twin wall PC:	200 kg/m <sup>3</sup>
Wood in general:	500 kg/m <sup>3</sup>		

### 3.3 Materials

Birch plywood is required for certain use and specifically mentioned in drawings if so.  
We require Birch plywood with structural strength and quality BB/BB.

Please note: All set pieces with paintwork delivered with additional paint for repairs.

### 3.4 Quality and safety

Ensure that all assembly and removal is possible by using a wrench, hammer, and a screwdriver only.  
All bolts to be minimum M10, unless otherwise specified.

Labelling: all sets pieces labelled with set piece number e.g. '111163.02.16' and weight indication.  
Labels must be clear, accurate and consistent across the set.

All hanging set pieces provided with rigging points M10.

All rigging points used for RDT must be according to Directive 2006/42/EC, add. II A.

All rigging points must have at least one bolt with lock nut bolted through the set piece.

Use planed and bevelled wood only with no sharp edges.

Channels in Twinn Wall PC – must be closed .

When using hollow profiles, ensure that ends are closed, and all weld seams must be smooth.

When using laser cut steel, edges bevelled.

All drilled holes for bolted joints in metal profiles must be oversize, for simple installation of bolts.

Welding according to DS/EN/ ISO standards equivalent:

- Steel: DS/EN/ISO 5817 equivalent
- Aluminium: DS/EN/ISO 10042:2018 equivalent; to quality level C



## Appendix 2. Project Description and Specifications

### HAMLET, PRINCE OF DENMARK

---

#### 3.5 Aluminium frame construction and welding

All aluminium frames welded according to DS/EN/ISO 10042 equivalent; to quality level C.

Welding quality and details as shown below.





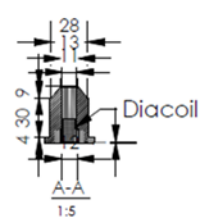
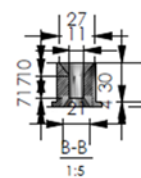
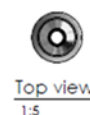
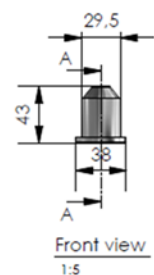
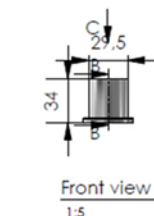
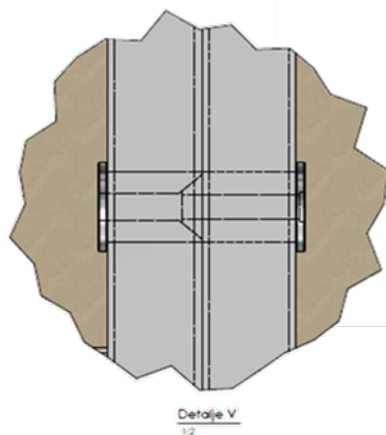
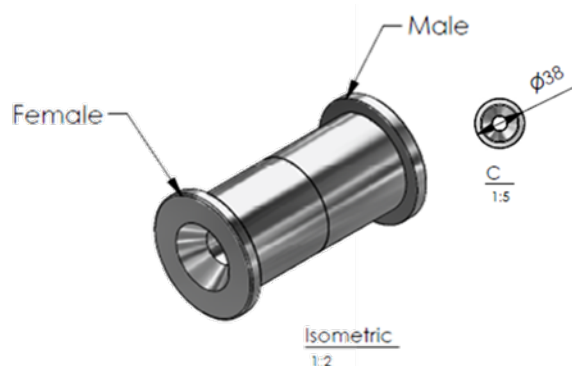


#### 4. MATERIEL DELIVERIES BY RDT

**100 pcs. Embedded threaded fittings used in the project delivered by RDT.**

The threaded fitting lathed in aluminium and has a cornice joint for accurate mounting.

Note! – Use Insert bolts, not regular!







## Appendix 2. Project Description and Specifications

### HAMLET, PRINCE OF DENMARK

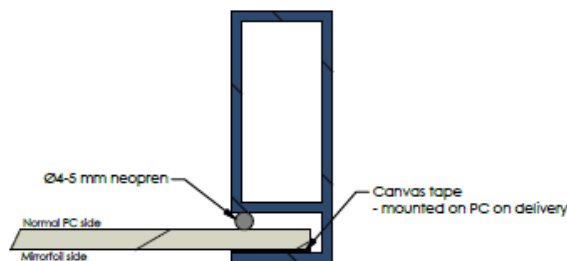
---

**To ensure that production and delivery time of custom-made aluminium profiles and the “spy-mirrors” – will not conflict with the final delivery terms - these items will be delivered by RDT shortly after contract signing.**

**100 tubes of 6-meter Custom-made aluminium profiles delivered by RDT.**

The project needs about 430 meters; the remaining profiles must be delivered to RDT –with the set. The profile has a blue colour in all technical drawings.

See drawing no. 111163-01-101 page 7



Custommade profile shown with PC, tape and neopren string  
1:1

The decision of using custom-made profile is to enable the mounting of mirrors, in a secure position. The 8 mm gap in the profile provides space for the mirrors and a tube of 4-5 mm neoprene.

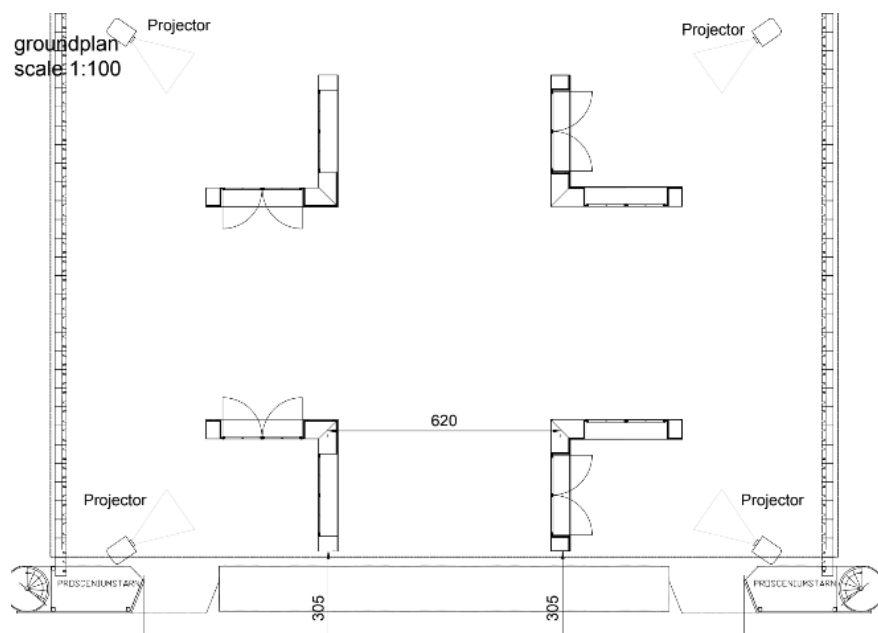
**X Mirror pieces, according to drawing XXXXXXXX delivered by RDT.**

The mirrors delivered are ready for mounting – cut in exact sizes.

The mirrors consist of 4 mm PC mounted with mirror foil and on edges covered with canvas tape.



## 5 SET AND STAGE PLAN AND MODEL PHOTOS





## Appendix 2. Project Description and Specifications

### HAMLET, PRINCE OF DENMARK

---





## Appendix 2. Project Description and Specifications

### HAMLET, PRINCE OF DENMARK

---





## Appendix 2. Project Description and Specifications

### HAMLET, PRINCE OF DENMARK

---







## Appendix 2. Project Description and Specifications

### HAMLET, PRINCE OF DENMARK

---





## Appendix 2. Project Description and Specifications

### HAMLET, PRINCE OF DENMARK

---

#### 6. 111163-01 WALLS



*Castle side*

*Mirror side*







## HAMLET, PRINCE OF DENMARK

---

### General Description

Four large L shaped walls / wall corners with castle interior on one side and mirrors on the reverse.

There are two different wall types, and each of them has a mirrored copy opposite.

The technical drawing (Pdf version in the tender) includes a full set of the two different corner wall styles, Wall 1 (Draw.no.111163-01-101) and Wall 2 (Draw. No. 111163-01-111)

Wall 3 is a mirrored version of Wall 1, and Wall 4 is a mirrored version of Wall 2.

### Construction

The show will be touring large cultural houses in Denmark with 6-8 performances.

To ensure a quick get in and out when touring and ease of assembly, packing and transport, the construction is a knock down solution. Please be observant of these conditions.

Each wall has a build-up consisting of three sections: Top, Middle and Bottom.

Each section folds together. The two sides of the wall connect with special hinges, which enable the two parts (after disconnection) to fold and stand side-by-side (illustrated in drawing no. 111163-01-102 page 3).

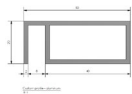
### Materials

The construction of the walls consists of aluminium profiles.

Custom-made aluminium profiles are specially marked with blue coloration in the drawings.

The construction made by:

Custom –made aluminium profiles 50\*20\*2 mm



Rectangular aluminium tubes:

40\*15-2 mm

40\*20\*2 mm

60\*20\*2 mm

80\*40\*2 mm

Square aluminium tubes:

20\*20\*2 mm

Unequal aluminium angle:

20/50\*2 mm



## HAMLET, PRINCE OF DENMARK

---

Please note that all frames for mirrors –have 3 sides with the custom-made profiles and closes with a 40\*15\*2 mm rectangular aluminium tube and an unequal aluminium angle 20/50\*2 mm – that in combination closes the frame. Illustrated in detail P, Draw.no. 111163-01-103 page 3.

### Mouldings wood

The wooden strips, skirting boards and mullions; see drawing no. 111163-01-121.

A minor variation from the drawn shape is acceptable.

### Castors

The tri-pod castors used – mounted with double clear rubber skater wheels, to ensure smooth and noiseless movement. The Wheels are Ø 75\*20mm and the build-in height of the tripod 134 mm. Turning circle Ø 381 mm.

The single free turn able castors used Ø 100 mm and the build in height is 128 mm.

### Cladding

The cladding is a build-up of 6 mm twin wall PC, the next layer is a 15 mm poplar plywood as the framing and a 10 mm poplar plywood as the middle part. Glued onto the twin wall PC - ; see drawing no. 111163-01-109 page 11-12. The twin wall mounted on the aluminium frames with Velcro. Each Panel must have at least one point of mechanical fixation.

The cladding for the wall ends, Cover plates is 6 mm twin wall PC, covered with black Stage- Molton, mounted with velcro. Apart from the top part with cut out for cornice, which need a 6 mm plywood.

## Function Description

### Doors

Some of the doors open, they have Pivot points at top and bottom.

See details in drawing 11163-01-104 page 10-11.

### Movement of walls

The walls are moveable (on castors) manually moved.

Spin – the individual wall has a spin-movement around a centre point in the corner,

The frames are prepared for the special pivot-point – but pivot mechanism is not part of the delivery in this tender.



## Appendix 2. Project Description and Specifications

### HAMLET, PRINCE OF DENMARK

---

#### Surface

##### Painting of the walls/castle side

The castle side with panels has a grey tone, faded by use – worn look.

The surface has a structure of a multiple painted surface.

The grey bottom colour stands out, as a multiple painted surface with visible paint markings is a RAL 7046 mat. The top coating is a mat lacquer.

The patina of years gone by as shown in the model photos below, with highlights and shading.

Please note that the patina is applied on the assembled walls and must be carried out in cooperation with and presence of the Set Designer.

Doors and window frames painted black RAL 9005 Gloss 30, with a similar surface of multiple layers and paint marks. The floor part painted red RAL 3005.

Doorknobs similar to photo, simple ball shape silvery doorknobs.



Apart from the sample required in Appendix 3, we will need paint samples in the production process



*Castle side*



## Appendix 2. Project Description and Specifications

### HAMLET, PRINCE OF DENMARK

---



*Castle side, inside corner*



*Mirror side*

#### **Painting of the walls/mirror side**

The visible aluminium profiles painted with RAL 9006 (white aluminium) gloss 10.

The framing has a uniform and smooth surface to comply with the wish to eliminate the structure of the framing as much as possible.

Please note that the black patina applied on the assembled walls and must be carried out in cooperation with and presence of the Set Designer.

Apart from the sample required in Appendix 3, we will need paint samples in the production process



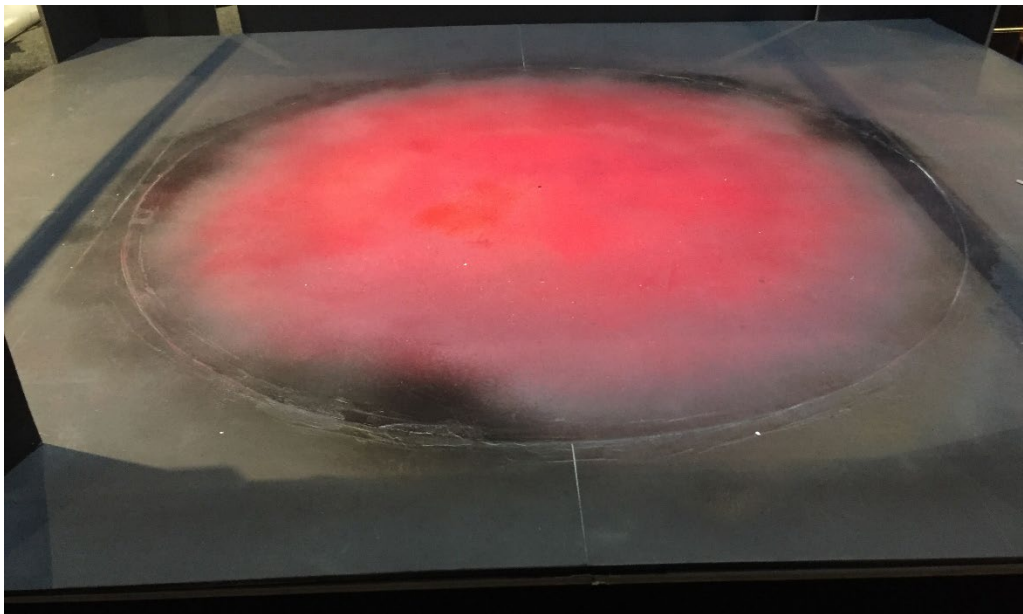
## Drawing references

<b>Overview all</b>		Draw. No. 111163-01-100
<b>Wall 1.</b>	<b>Full</b>	Draw. No.111163-01-101
	Bottom	Draw. No.111163-01-102
	Bottom A	Draw. No. 111163-01-103
	Bottom B	Draw. No.111163-01-104
	Middle	Draw. No.111163-01-105
	Middle A	Draw. No.111163-01-106
	Middle B	Draw. No.111163-01-107
	Top	Draw. No.111163-01-108
	Top A	Draw. No.111163-01-109
	Top B	Draw. No.111163-01-110
<b>Wall 2.</b>	<b>Full</b>	Draw. No.111163-01-111
	Bottom	Draw. No.111163-01-112
	Bottom A	Draw. No. 111163-01-113
	Bottom B	Draw. No.111163-01-114
	Middle	Draw. No.111163-01-115
	Middle A	Draw. No.111163-01-116
	Middle B	Draw. No.111163-01-117
	Top	Draw. No.111163-01-118
	Top A	Draw. No.111163-01-119
	Top B	Draw. No.111163-01-120
<b>Wall 1&amp;2</b>	Mouldings	Draw. No.111163-01-121
	Trolley for bottom parts	Draw. No.111163-01-122





## **7. 111163-02 FLOOR**



### **Description**

Black floor with a big red “blood” splash to cover most of the floor.

### **Function Description**

Static element with no further functions.

Numbered parts.



## Appendix 2. Project Description and Specifications

### HAMLET, PRINCE OF DENMARK

---

#### **Surface**

The up-side

Painted – Black Stage RAL 9005 Gloss 10

Painted – A big red “splash of blood” RAL 3005 (wine red). As shown in model photos.

The rear side of floorboards must have a closed surface, could be one layer of paint/lacquer.

Apart from the sample required in Appendix 3, we will need paint samples in the production process.

#### **Materials**

Birch plywood with tongue and groove.

#### **Drawing references:**

111163-02-125\_Floor